

# PARTS MANUAL

# 01.BEFORE STARTING

## 01.WEBSITE INTRUCTIONS

CHASSIS: 0

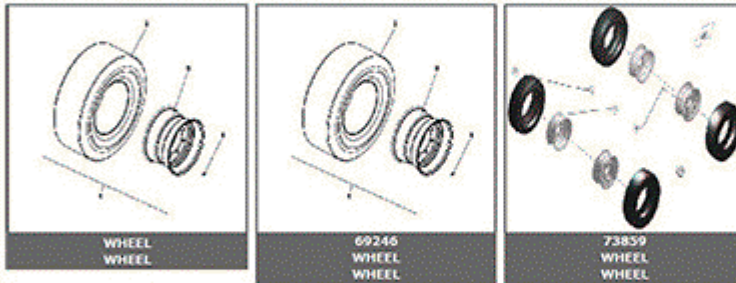
-If you observe this frame in any window it means that the body-in-frame in the picture that is showed it suffered a modification in one or several pieces in a determinate body-in-frame number. The number in **BOLD** letters indicates the picture appearing on the screen and the correct references for each ID number.

**CHASSIS CHANGES**

➤ **73859**

➤ **69246**

If you click any of the numbers, it will take you to another window like this:



In this case the numbers mean that from machine 00000 to 69245 it belongs the 1st image, which has a picture with its own references. From machine 69246 to 73858 it belongs the 2nd image, which has a picture with its own references. And from machine 73859 to Nowadays it belongs the 3rd image, which has a picture with its own references.


[-Before purchasing if you have any doubt or request please contact Spare Parts or After Sales Dept.](#)

FIGURE	REFERENCE	DENOMINATION	AMOUNT
--------	-----------	--------------	--------

## 02.ENGINE

### 01.ENGINE

CHASSIS: 0

 Please, for more engine spare parts and details please check the following website or contact us:  
"MANUALS/OPERATOR'S AND WORKSHOP MANUALS/TAURULIFT/TH 2513/4 GPE KUBOTA ENGINE V1505-E3B"

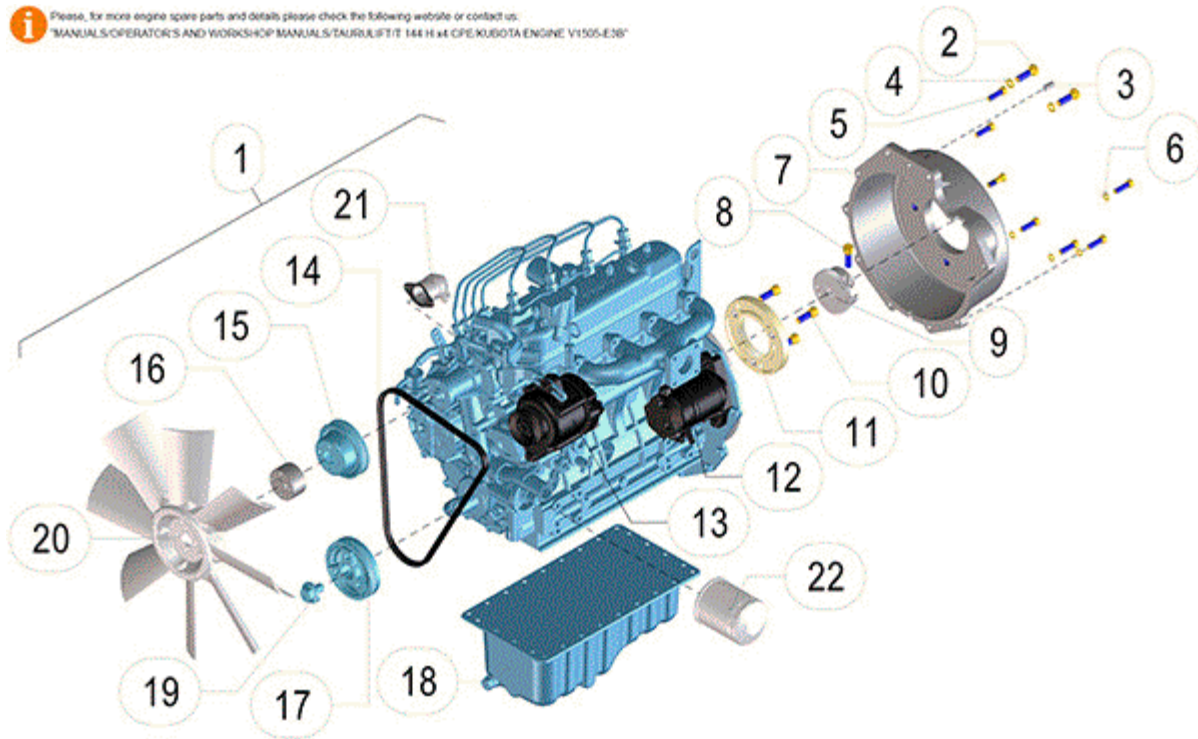


FIGURE	REFERENCE	DENOMINATION	AMOUNT
001	12.02100.02	DIESEL ENGINE 22.7 kW KUBOTA V1505-E3B (EPA)	1
002	617.10035.86	SCREW DIN960 M10x1.25x35	2
003	402.08020.00	PIN DIN1481 8x20	1
004	104.10000.00	WASHER DIN7980 D10	2
005	601.08030.86	SCREW DIN912 M8x30	7
006	104.08000.00	WASHER DIN7980 D8	7
007	12.02093.00	COUPLING D102XD276X100	1
008	601.10030.86	SCREW DIN912	1
009	70.02091.01	COUPLING GEA/GEA Z50XZ15X37	1
010	633.10030.86	SCREW DIN912 M10x1.25x30	3
011	70.02090.01	COUPLING CYL D135 Z50	1
012	KU1661163010	ASSY STARTER	1
013	KU1667864012	ALTERNATOR	1
014	KU1628297010	BELT V	1
015	KU1624174250	FAN PULLEY	1
016	35.02153.01	FAN SPACER SUPPORT 30x55	1
017	KU1624174280	FAN PULLEY	1
018	KU1661601600	KIT OIL PAN	1



019	KU1624191020	PULLEY SCREW	1
020	35.02019.01	FAN 8X40 D370	1
021	KU1720860015	STOP SOLENOID ASSY	1
022	KUHH16032093	CARTRIDGE OIL FILTER	1

## 02.ENGINE

### 02.EXHAUST SYSTEM

CHASSIS: 0

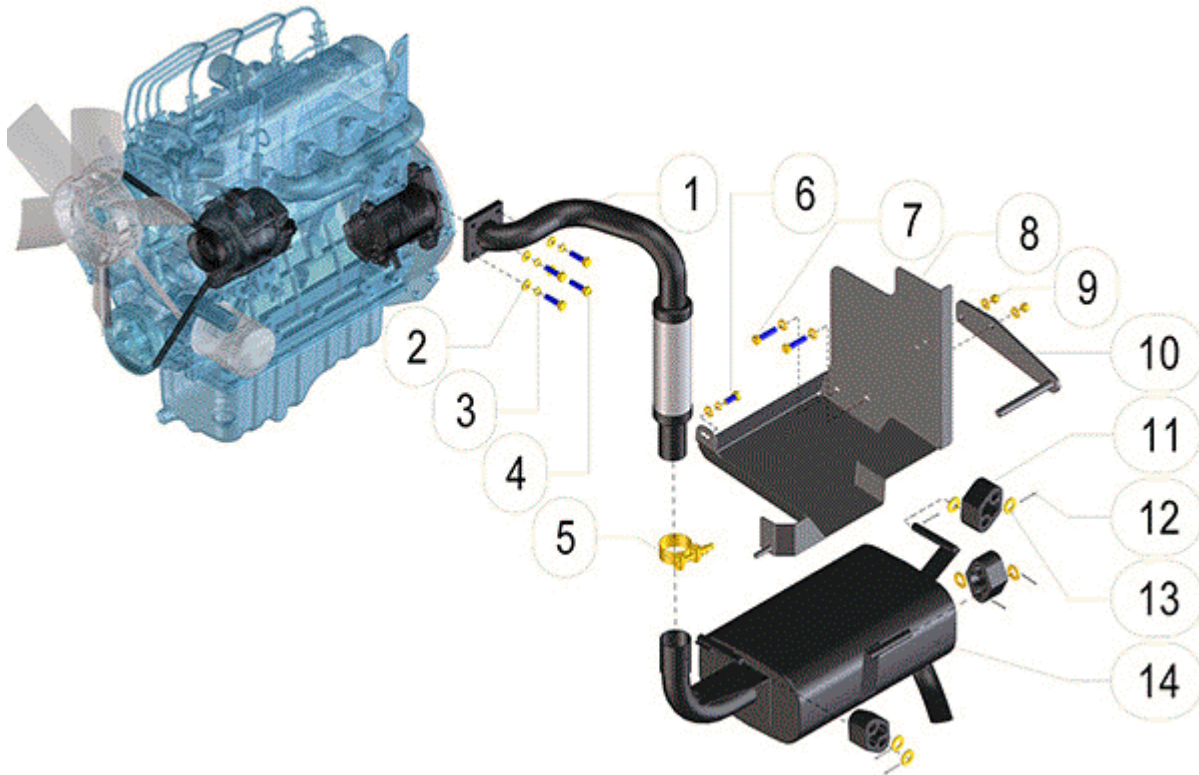


FIGURE	REFERENCE	DENOMINATION	AMOUNT
001	35.02075.00	EXHAUST MANIFOLD D40X369	1
002	101.08000.66	WASHER DIN125 D8	9
003	104.08000.00	WASHER DIN7980 D8	5
004	603.08030.86	SCREW DIN933 M8X30	4
005	935.44047.66	CLAMP MIKALOR SUPER 44-47	1
006	603.08020.86	SCREW DIN933 M8x20	1
007	603.08035.86	SCREW DIN933	2
008	35.02072.01	PROTECTOR 366X321X244	1
009	711.08000.66	NUT DIN982 M8	2
010	35.02073.00	SUPPORT 205X67X116	1
011	46.02018.00	SHOCK DAMPER 35x50x72	3
012	401.02025.60	PIN DIN94 2x25	6
013	101.12000.66	WASHER DIN125 D12	6
014	35.02070.00	MUFFLER D41X465	1

## 02.ENGINE

### 03.INTAKE SYSTEM

CHASSIS: 0

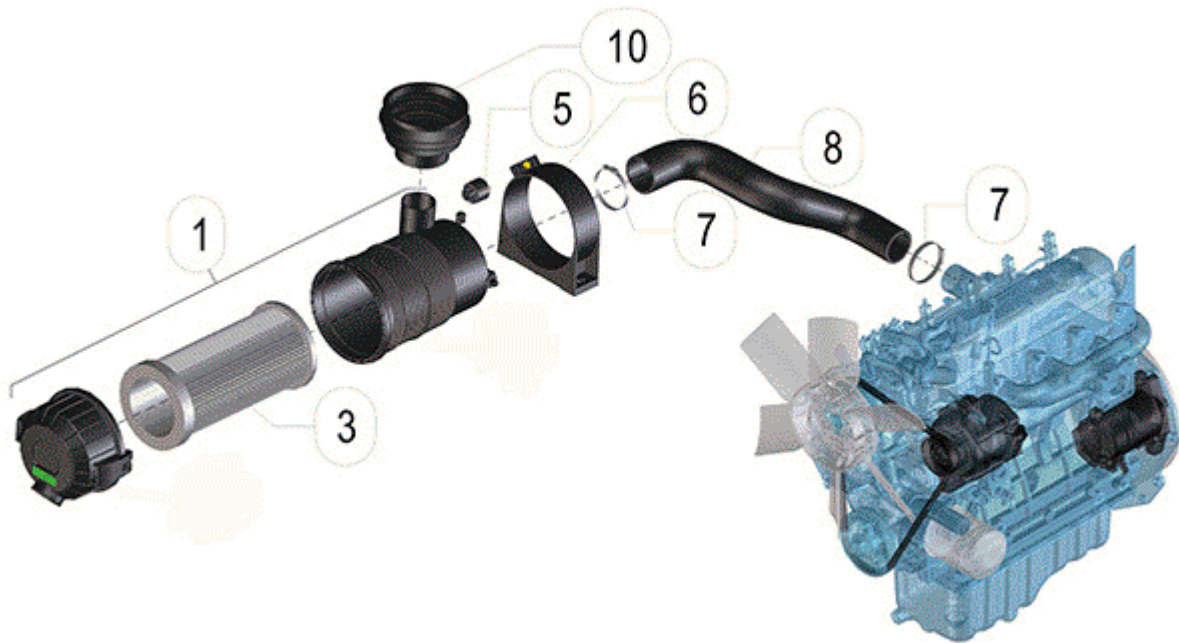


FIGURE	REFERENCE	DENOMINATION	AMOUNT
001	45.01200.12	AIR FILTER VIRGIS	1
003	45.01204.00	FILTER ELEMENT 60x105x300 (500H)	1
005	43.50119.00	AIR FILTER INDICATOR	1
006	45.01201.11	CLAMP Ø146x50.5 AIR FILTER	1
007	912.40060.66	CLAMP D40-60	2
007	912.40060.66	CLAMP D40-60	1
008	35.02032.00	AIR INTAKE TUBE D44XD50X281	1
010	32.02035.00	BELLOW COVER	1

## 02.ENGINE

### 04.MECHANICAL POWER

CHASSIS: 0

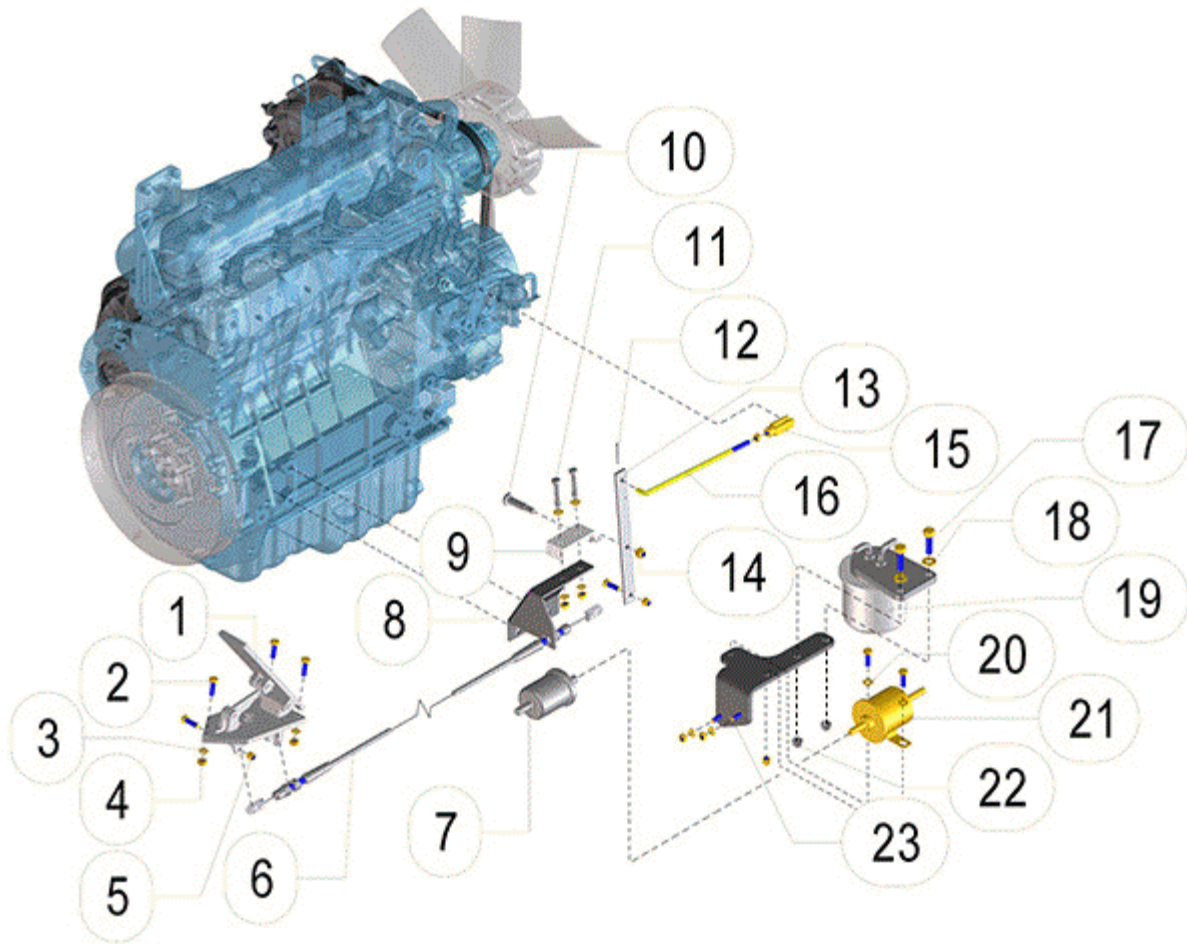


FIGURE	REFERENCE	DENOMINATION	AMOUNT
001	12.02020.00	THROTTLE PEDAL VIMOTER	1
002	603.06020.86	SCREW DIN933 M6x20	9
003	104.06000.00	WASHER DIN7980 D6	7
004	701.06000.66	NUT DIN934 M6X1	8
005	711.06000.66	NUT DIN982 M6	4
006	12.02043.00	THROTTLE CABLE 1273	1
007	70.02200.00	DIESEL ENGINE KUBOTA D1105	1
008	12.02041.00	SUPPORT 88X91X96	1
009	01.00126.02	AXLE SUPPORT 20X29X60	1
010	00.01366.01	AXLE 16X7X47 THROTTLE PEDAL	1
011	604.06035.86	SCREW DIN931 M6x35	2
012	401.02025.60	PIN DIN94 2x25	1
013	20.02142.00	LEVER 4X18X191	1
014	711.07000.66	NUT DIN982 M7	1

015	10.16348.00	ACTIONING FORK	1
016	43.00727.00	ROD FORL6 180 M-AGU	1
017	603.08030.86	SCREW DIN933 M8X30	2
018	101.08000.66	WASHER DIN125 D8	2
019	KU1522143170	FUEL CARTRIDGE FILTER	1
020	101.06000.66	WASHER DIN125 D6	4
021	KURC60151351	FUEL ASSY PUMP	1
022	711.08000.66	NUT DIN982 M8	2
023	35.02021.00	FUEL FILTER SUPPORT 85X155	1



## 02.ENGINE

### 05.COOLING SYSTEM

CHASSIS: 0

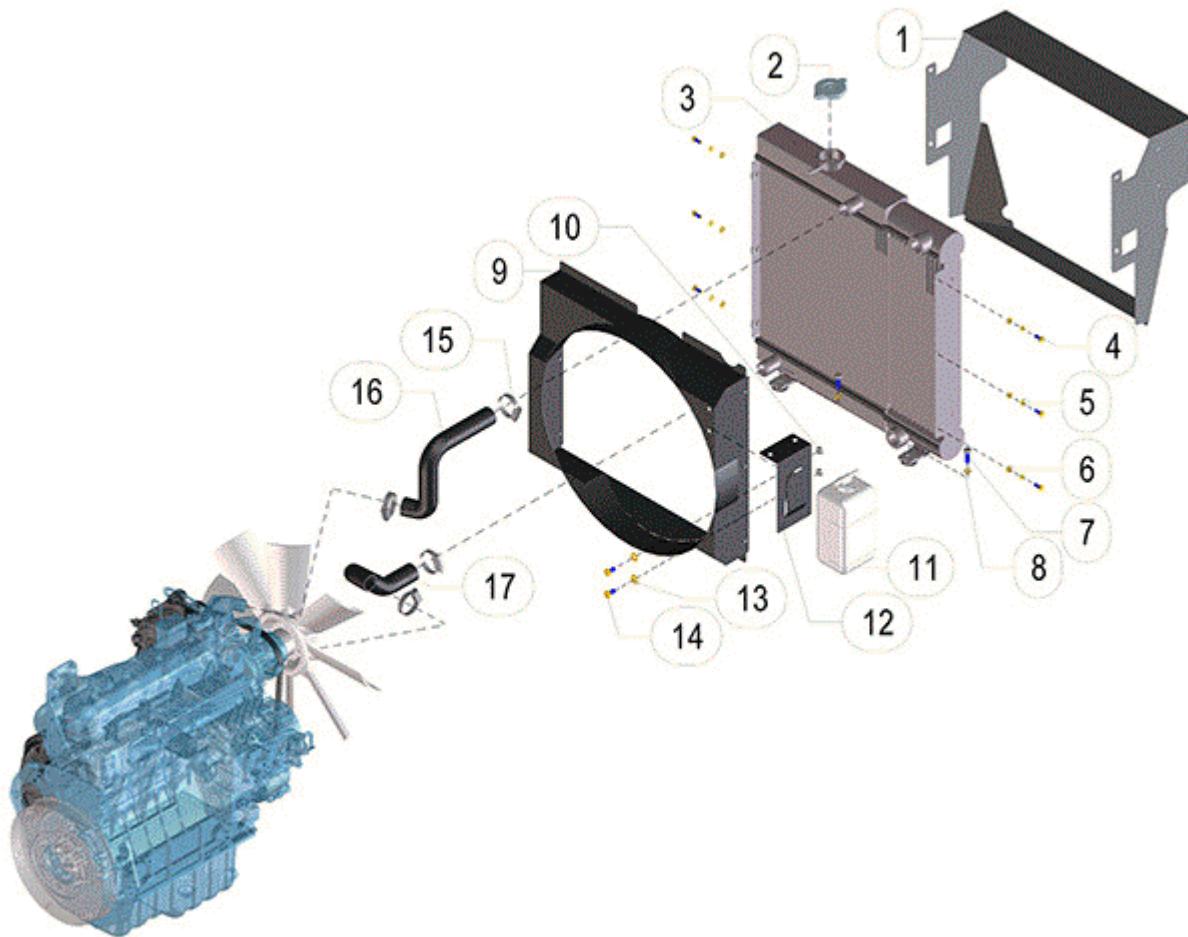


FIGURE	REFERENCE	DENOMINATION	AMOUNT
001	35.02057.00	DIFFUSER 491X439X221	1
002	35.02051.00	RADIATOR CAP	1
003	35.02150.00	WATER HEATER 140X485X514 AC	1
004	603.06015.86	SCREW DIN933 M6x15	6
005	104.06000.00	WASHER DIN7980 D6	6
006	101.06000.66	WASHER DIN125 D6	6
007	603.08025.86	SCREW DIN933 M8x25	2
008	104.08000.00	WASHER DIN7980 D8	2
009	35.02152.01	RADIATOR COVER 79X405X485	1
010	701.08000.66	NUT DIN934 M8X1,25	2
011	70.02028.00	KUBOTA EXPANSION TANK	1
012	70.02076.00	TANK SUPPORT 50X90X160	1
013	101.08000.66	WASHER DIN125 D8	2
014	603.08015.86	SCREW DIN933 M8x15	2

015	912.30045.00	CLAMP	4
016	35.02053.00	RUBBER HOSE B/P D27XD36X181	1
017	35.02054.00	RUBBER HOSE B/P D27XD36X181	1

### 03.TRANSMISSION

#### 01.COMPLETE TRANSMISSION

CHASSIS: 0

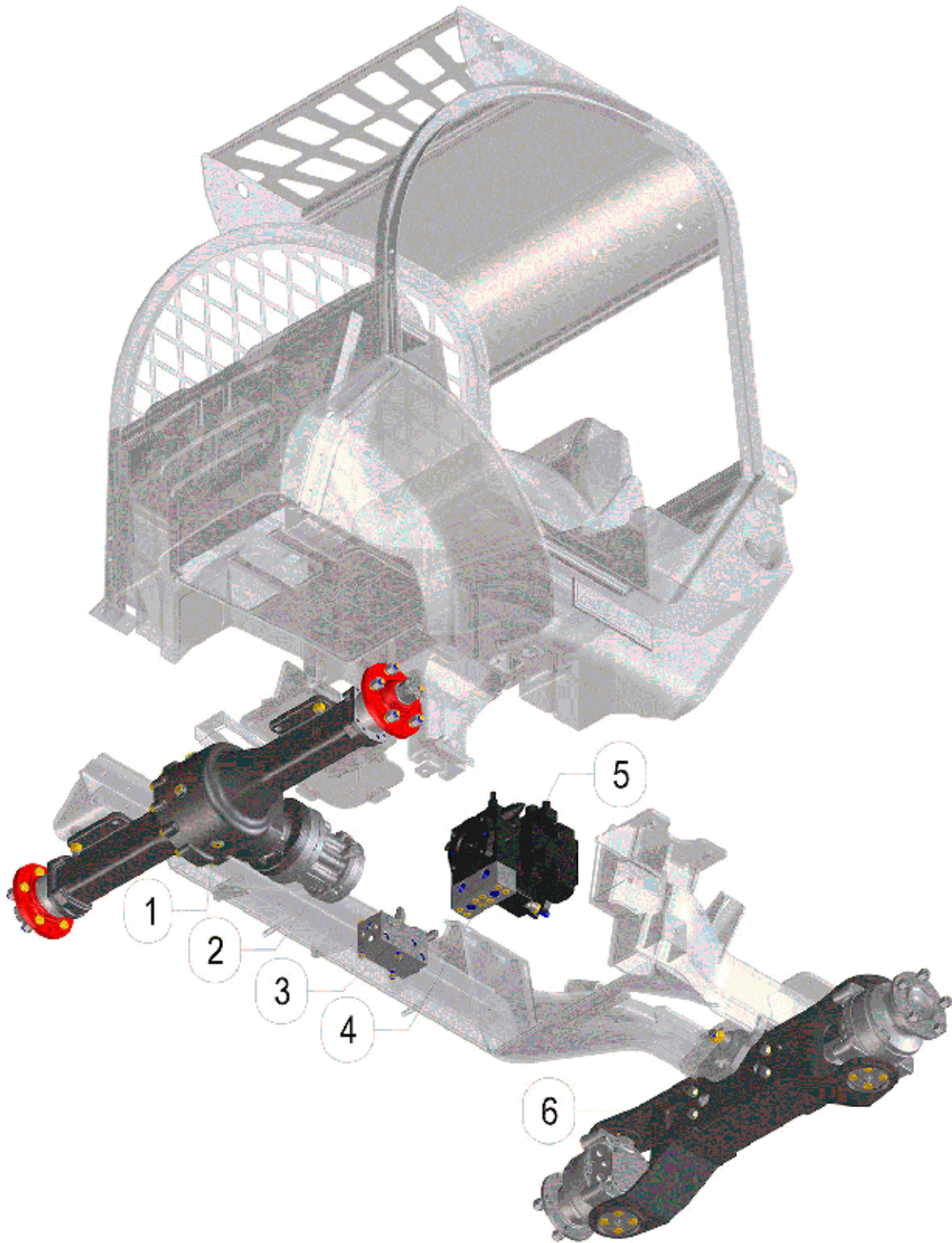


FIGURE	REFERENCE	DENOMINATION	AMOUNT
001	05.03307.11	FIXED AXLE NTJ T144H X4	1

002	35.03610.00	HYDRAULIC MOTOR 297CC	1
003	35.10015.00	TRANSMISSION VALVE	1
004	35.03230.00	SLPLITING BLOCK 150X60X60	1
005	35.03270.01	HYDRAULIC PUMP 45 CC	1
006	05.03401.03	STEERING AXLE T144H X4	1

## 03.TRANSMISSION

### 02.FRONT AXLE

CHASSIS: 0

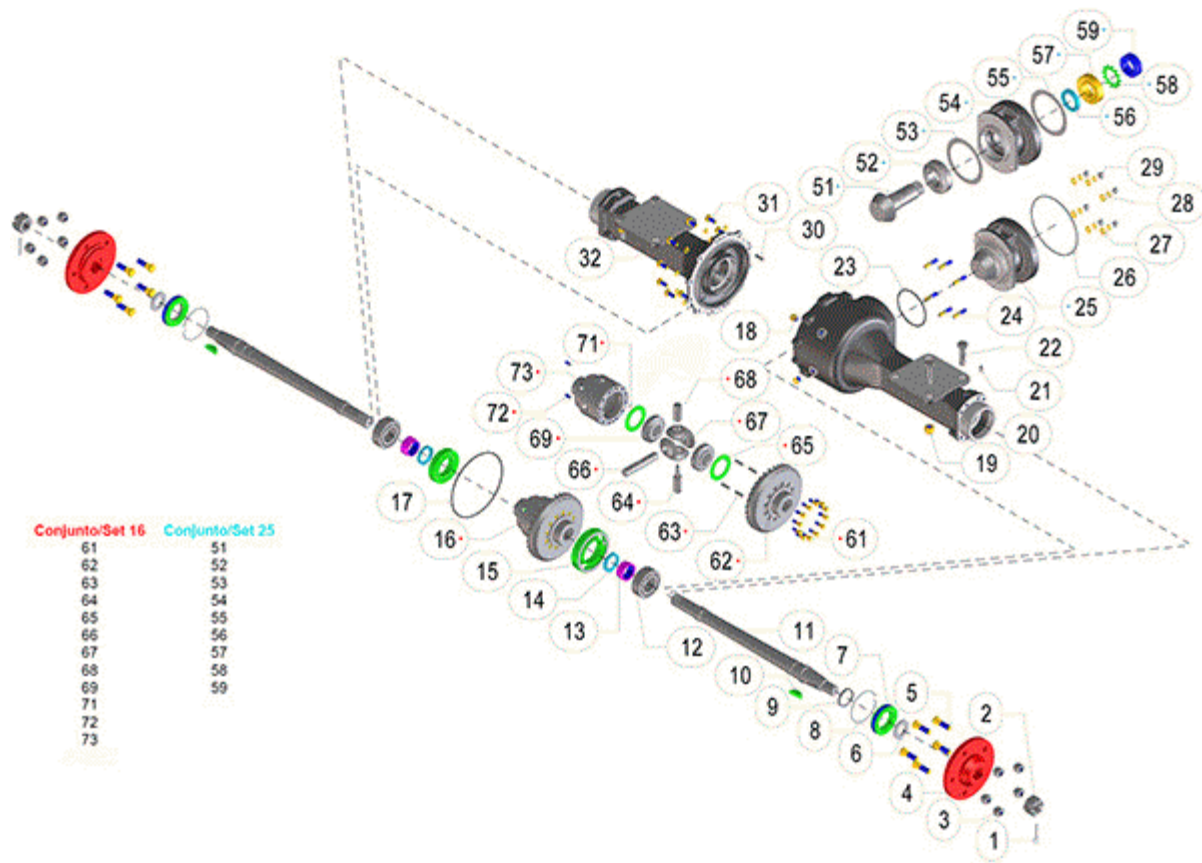


FIGURE	REFERENCE	DENOMINATION	AMOUNT
001	401.04050.60	PIN DIN94 4x50	2
002	01.01319.00	NUT DIN935 M30x2x30	2
003	46.00588.00	NUT DIN982 M14x1,5	10
004	05.03313.00	WHEEL HUB 184X61	2
005	35.03355.00	WHEEL BOLT M14X1.5X57	10
006	101.30000.66	WASHER DIN125 D30	2
007	02.00417.00	NUT DIN547 M88x1,5 TROMPET	2
008	02.00419.00	RING DIN471 E93x3	2
009	202.45007.50	SEAL DIN3760 45x55x7	2
010	02.00519.01	KEY DIN6888 10x16x45	2
011	05.03321.00	DRIVESHAFT 622X54	2
012	304.45302.00	BEARING DIN628 3209	2
013	02.00415.00	DRIVESHAFT NUT DIN547	2
014	205.40557.50	SEAL DIN3760 40X55X7	2
015	303.70024.00	BEARING DIN628 7214-B	2
016	05.03308.00	DIFFERENTIAL SET SPROCKET	1

017	201.19535.50	GASKET DIN3770 195X3.5	1
018	10.00921.00	CAP M14X150 DIN908	3
019	711.16000.86	NUT DIN982 M16 C8	8
020	05.03314.00	ASCLE 615X260	1
021	901.08000.33	GREASER DIN71412-A M8x1,25	2
022	604.16050.86	SCREW DIN931 M16x50	8
023	201.10435.50	GASKET DIN3770 104.37X3.53	1
024	15.00476.00	STUD M10x47	6
025	05.03312.00	COUPLING CYL/CYL 185X100	1
026	201.17502.50	GASKET DIN3770 175X2	1
027	101.10000.66	WASHER DIN125 D10	6
028	104.10000.00	WASHER DIN7980 D10	17
029	711.10000.66	NUT DIN982 M10x1.5	6
030	403.08030.00	PIN DIN6325 D8X30	1
031	603.10025.86	SCREW DIN933 M10x25	11
032	05.03315.00	ASCLE 470X260	1
051	05.03331.00	PINION GEAR Z12	1
052	307.48030.00	BEARING DIN720 HM804848	1
053	05.03351.00	WASHER CALA CALIBER 0.2	1
054	05.03312.00	COUPLING CYL/CYL 185X100	1

### 03.TRANSMISSION

#### 02.FRONT AXLE

CHASSIS: 0

FIGURE	REFERENCE	DENOMINATION	AMOUNT
055	05.03352.00	WASHER CALIBER 0.3	1
056	205.04508.50	RADIAL SHAFT SEAL DIN3760 45X65X8	1
057	307.45025.00	BEARING DIN720 32209A	1
058	111.04500.00	SAFETY WASHER MB9 D45	1
059	907.45010.99	NUT SKF KM9 M45-9,4	1
061	601.08025.90	SCREW DIN912 M8X25	12
062	05.03332.00	SPROCKET Z33 DIFERENTIAL	1
063	403.08030.00	PIN DIN6325 D8X30	4
064	05.03336.00	CROSS SHAFT AXIS 22X86	1
065	15.00411.02	ADJUSTABLE WASHER 52.25x77x3	2
066	05.03335.00	CROSS SHAFT AXIS 22X122	1
067	05.03334.00	CONICAL SATELLITE PINION Z12	4
068	05.03337.00	CROSS SHAFT AXIS 22X51	1
069	05.03333.00	CONICAL SATELLITE PINION Z26	1

071	403.03010.00	PIN DIN6325 3x10	1
072	636.08020.80	SCREW DIN915 M8x20	2
073	05.03345.00	DIFFERENTIAL CASE 122X134.5 4S	1

## 03.TRANSMISSION

### 03.STEERING AXLE

CHASSIS: 0

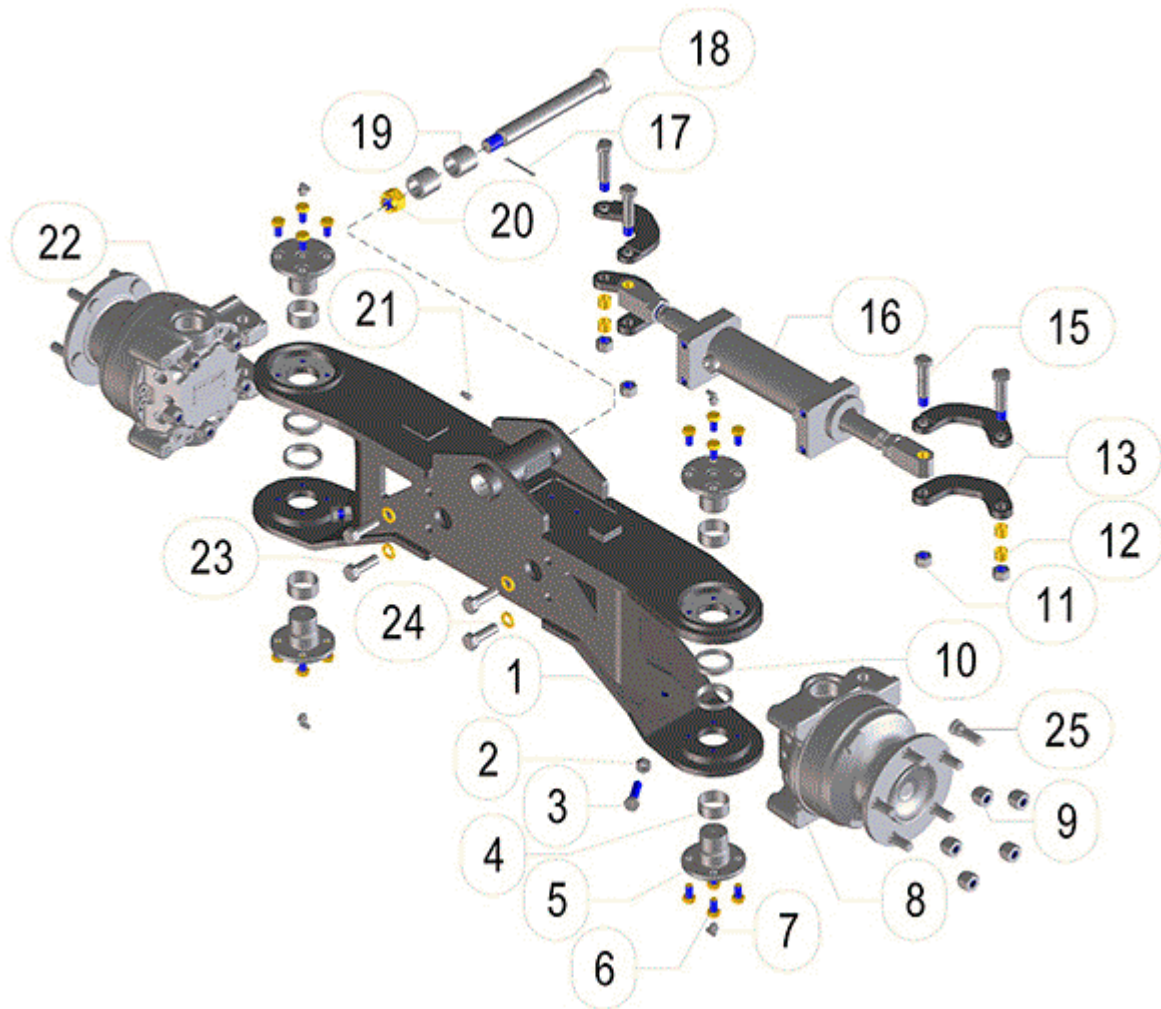


FIGURE	REFERENCE	DENOMINATION	AMOUNT
001	05.03420.02	STEERING AXLE 945X314X162	1
002	701.12000.66	NUT DIN934 M12x1.75	2
003	603.12045.86	SCREW DIN933	2
004	05.03413.00	KIT HUB CAP MOTORUEDA	2
005	05.03412.00	MOTORUEDA SHAFT 90X55.5	2
006	603.10020.86	SCREW DIN933 M10x20	16
007	902.10000.33	GREASER DIN71412-C M10x1	4
008	05.03602.00	HYDRAULIC WHEEL ENGINE 180CC RUEDA	1
009	46.00588.00	NUT DIN982 M14x1,5	10
010	05.03414.00	DUST 45X55X10	4
011	718.14000.66	NUT DIN985 M14x1,5	4
012	952.01615.00	CAP D16XD18X15	4



013	05.03422.01	STEERING ROD 113X12	4
015	10.03614.03	AXLE Ø16X82.5	4
016	05.03460.01	CYLINDER D/E 55X580	1
017	401.04050.60	PIN DIN94 4x50	1
018	12.03010.00	AXLE 26X20X229	1
019	39.10616.00	BUSH	2
020	710.20000.66	NUT DIN935 M20x1,5	1
021	901.08000.33	GREASER DIN71412-A M8x1,25	1
022	05.03602.00	HYDRAULIC WHEEL ENGINE 180CC RUEDA	1
023	603.14045.86	SCREW DIN933 M14x45	4
024	104.14000.00	CIR-CLIP EXT. DIN7980	4
025	PO002627935B	WHEEL SCREW SET (5 U)	2

### 03.TRANSMISSION

#### 03.STEERING AXLE

CHASSIS: 1

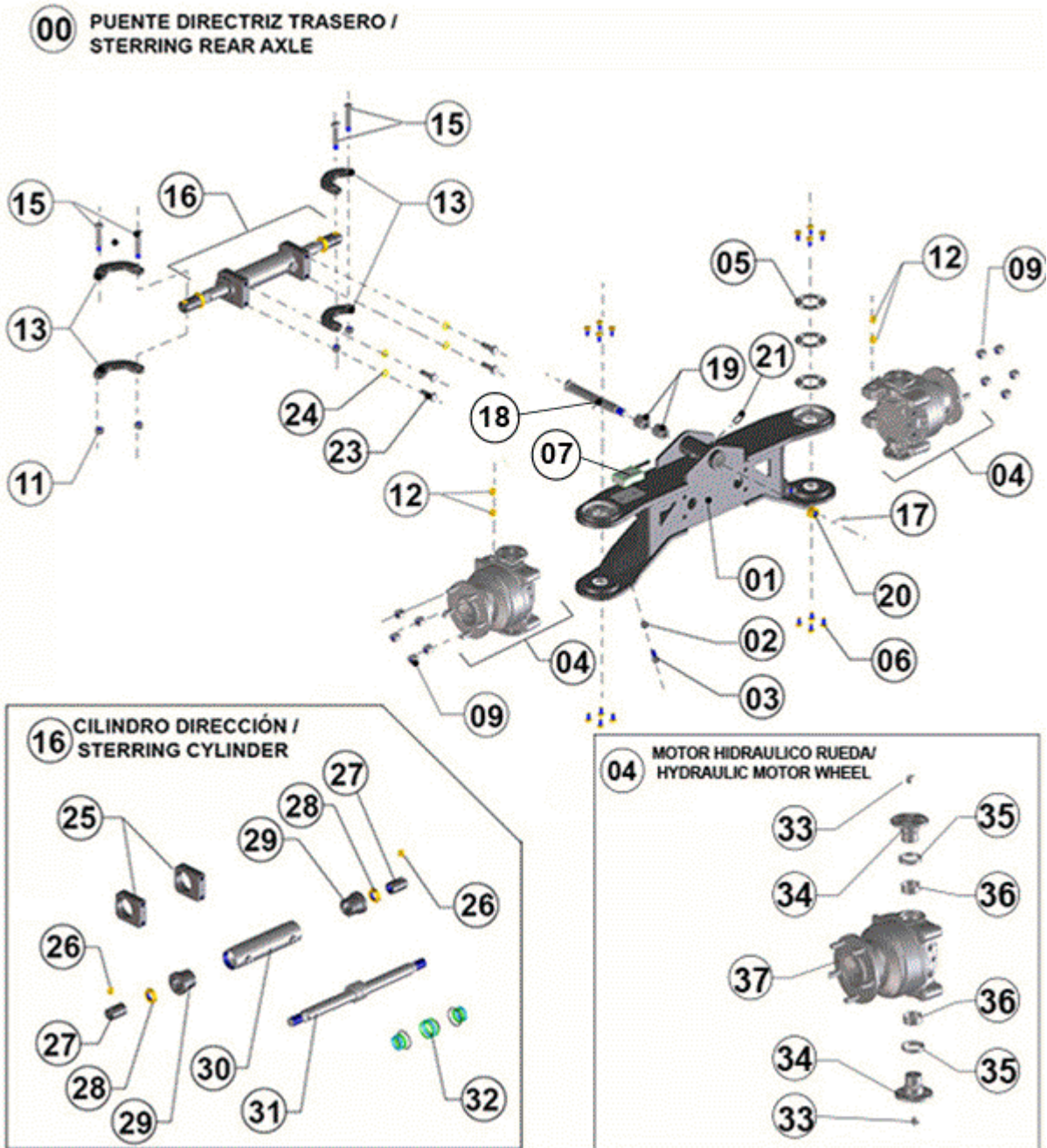


FIGURE	REFERENCE	DENOMINATION	AMOUNT
000	05.03401RE04	STERRING REAR AXIS	1
001	05.03420.02	STEERING AXLE 945X314X162	1
002	701.12000.66	NUT DIN934 M12x1.75	1
003	603.12035.86	SCREW DIN933	2
004	35.03615.00	WHEEL HYDRAULIC MOTOR 398cc	2
006	603.10020.86	SCREW DIN933 M10x20	16

007	35.11115.00	SECTION I / E LOAD CELL	1
009	46.00588.00	NUT DIN982 M14x1,5	5
011	718.14000.66	NUT DIN985 M14x1,5	4
012	952.01615.00	CAP D16XD18X15	4
013	05.03422.01	STEERING ROD 113X12	4
015	10.03614.03	AXLE Ø16X82.5	4
016	05.03460.01	CYLINDER D/E 55X580	1
017	401.04050.60	PIN DIN94 4x50	1
018	12.03010.00	AXLE 26X20X229	1
019	39.10616.00	BUSH	2
020	710.20000.66	NUT DIN935 M20x1,5	1
021	901.08000.33	GREASER DIN71412-A M8x1,25	1
023	603.14035.86	SCREW DIN933	4
024	104.14000.00	CIR-CLIP EXT. DIN7980	4
025	05.03465.00	SUPPORT GUIDE TUBE 25X86X86	2
026	952.01615.00	CAP D16XD18X15	4
027	05.03463.01	HEAD STEM M30X1.5 D40X65	2
028	702.27000.66	WASHER DIN125*	2
029	05.03464.01	STEM GUIDE D35XD68X53.5	2
030	05.03461.00	TUBE MET. D55X258 CYLINDER	1
031	05.03462.01	STEM D35X528	1
032	05.03454.01	SEALING KIT	1
033	902.10000.33	GREASER DIN71412-C M10x1	4
034	05.03412.00	MOTORUEDA SHAFT 90X55.5	4
035	05.03414.00	DUST 45X55X10	4
035	05.03414.00	DUST 45X55X10	2
036	05.03413.00	KIT HUB CAP MOTORUEDA	2
037	05.03602.00	HYDRAULIC WHEEL ENGINE 180CC RUEDA	2

### 03.TRANSMISSION

#### 04.PUMPS, ENGINES AND VALVES

CHASSIS: 0

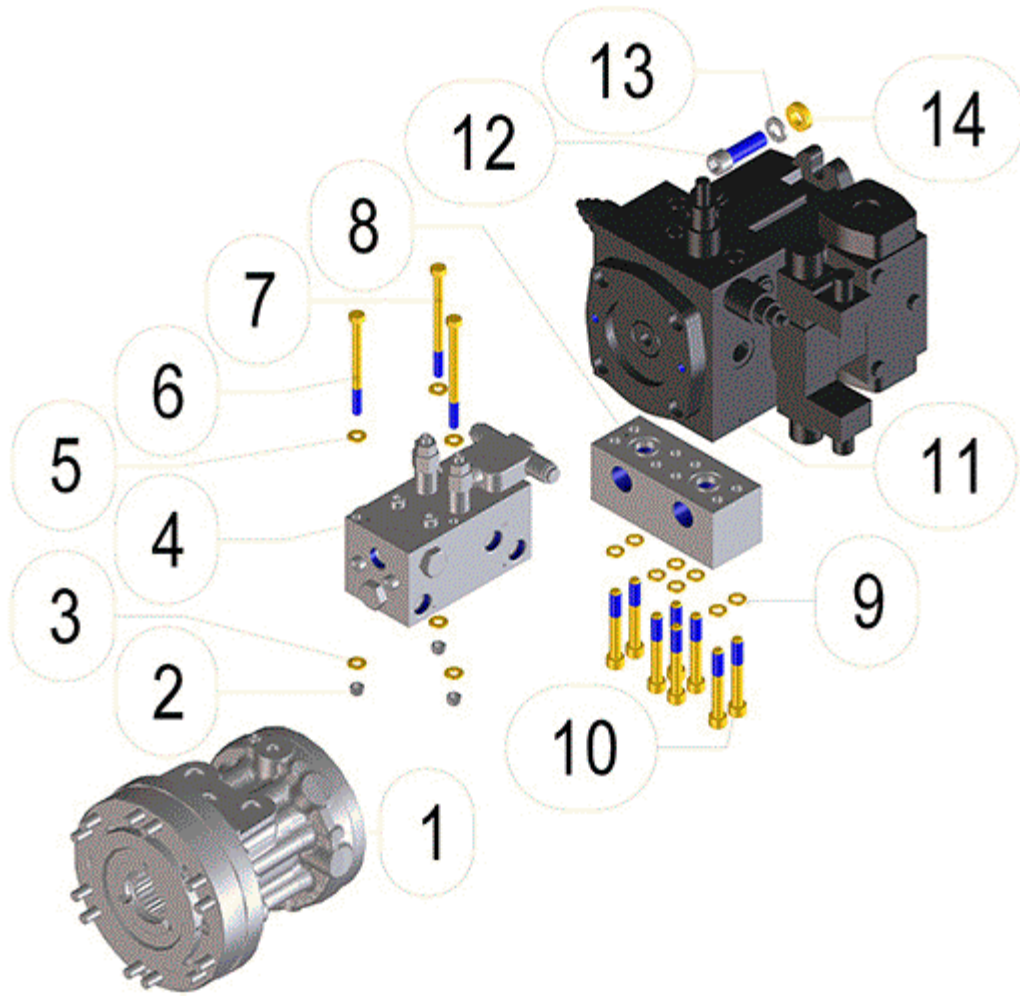


FIGURE	REFERENCE	DENOMINATION	AMOUNT
001	35.03610.00	HYDRAULIC MOTOR 297CC	1
002	711.08000.66	NUT DIN982 M8	3
003	101.08000.66	WASHER DIN125 D8	6
004	35.10015.00	TRANSMISSION VALVE	1
006	604.08100.86	SCREW DIN931 M8x100	1
007	604.08110.87	SCREW DIN913 M8X110	2
008	35.03230.00	SLPLITING BLOCK 150X60X60	1
009	104.10000.00	WASHER DIN7980 D10	8
010	601.10070.86	SCREW DIN912 M10X70	8
011	35.03270.01	HYDRAULIC PUMP 45 CC	1
012	601.14045.86	SCREW DIN912 M14x45	2
013	104.14000.00	CIR-CLIP EXT. DIN7980	2
014	15.30110.00	WASHER 14X7X26	2

# 04.CHASSIS AND STRUCTURAL SUPPORTS

## 01.CHASSIS AND STRUCTURAL SUPPORTS

CHASSIS: 0

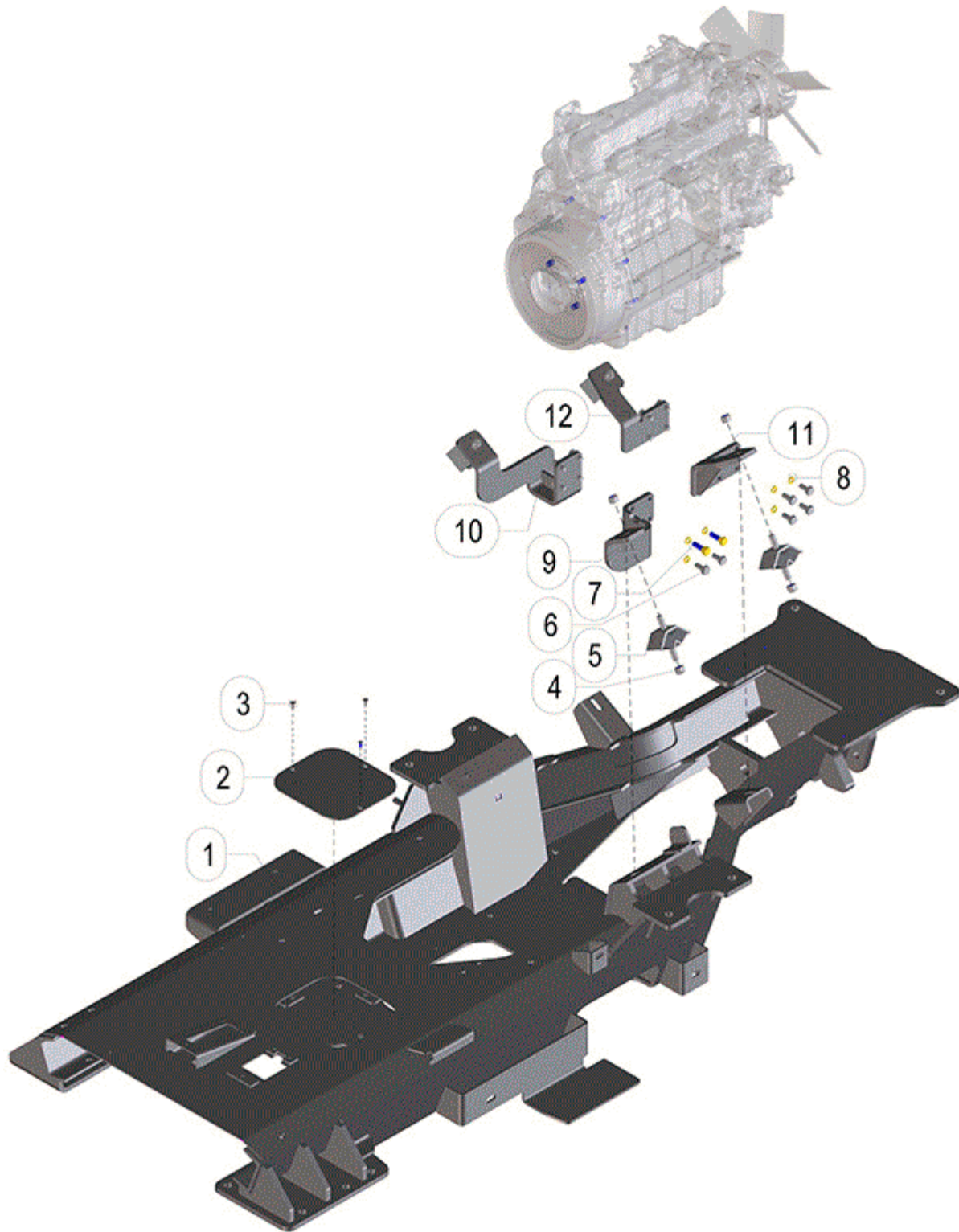


FIGURE	REFERENCE	DENOMINATION	AMOUNT
--------	-----------	--------------	--------

001	35.04000.03	BODY-ON-FRAME 347X828X2144	1
002	35.04031.00	LEFT GUARD 726X315X3	1
003	618.06010.86	SCREW DIN7991 M6x10	3
004	711.12000.86	NUT DIN982 M12 C8	8
005	70.02029.00	SHOCK DAMPER 50x88x42	4
006	617.10025.86	SCREW DIN960 M10X25X1.25	14
007	617.10035.86	SCREW DIN960 M10x1.25x35	2
008	104.10000.00	WASHER DIN7980 D10	16
009	35.02017.00	ENGINE LEFT SUPPORT 134X154X221	1
010	35.02016.00	ENGINE RIGHT SUPPORT 150X175X221	1
011	35.02018.00	ENGINE LEFT SUPPORT 124X138X144	1
012	35.02012.00	ENGINE RIGHT SUPPORT 119X131X144	1

# 05.BRAKING SYSTEM

## 01.FOOT BRAKE

CHASSIS: 0

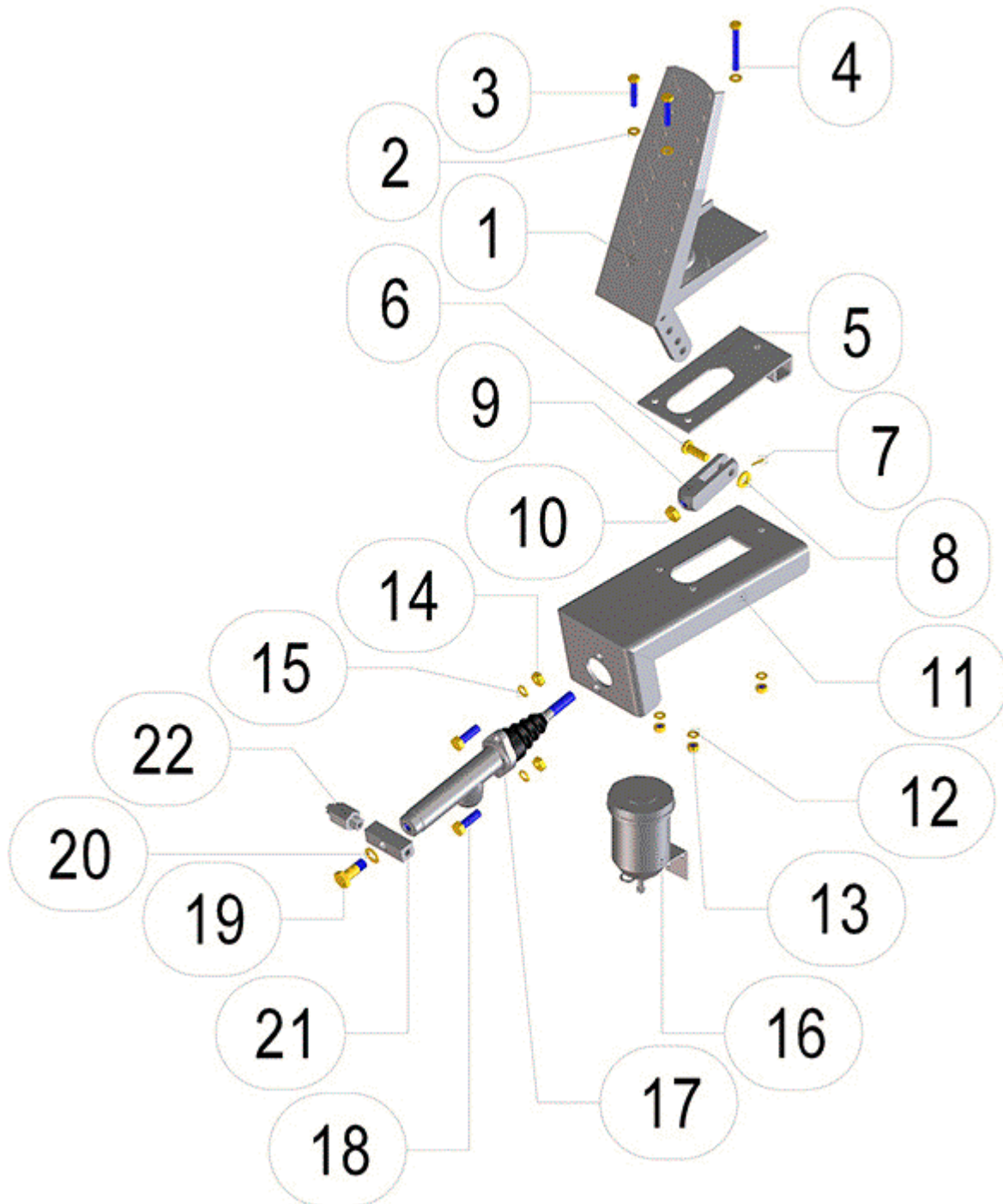


FIGURE	REFERENCE	DENOMINATION	AMOUNT
001	43.80252.00	BRAKING PEDAL	1
002	101.06000.66	WASHER DIN125 D6	3
003	603.06030.86	SCREW DIN933 M6x30	2

004	603.06050.86	SCREW DIN933 M6X50	1
005	35.04048.00	SUPPLEMENT 20X25X70	1
006	01.00514.01	AXLE CIL/CPA 14x8x28	1
007	401.02020.60	PIN DIN94 2x25	1
008	101.08000.66	WASHER DIN125 D8	1
009	15.00715.00	ARTICULATED FORK	1
010	701.10000.66	NUT DIN934 M10x1.5	1
011	20.03076.00	FOOT PUMP SUPPORT	1
012	104.06000.00	WASHER DIN7980 D6	3
013	701.06000.66	NUT DIN934 M6X1	3
014	701.08000.66	NUT DIN934 M8X1,25	1
015	104.08000.00	WASHER DIN7980 D8	2
016	43.00751.01	BRAKING LIQUID TANK	1
017	20.03070.00	FOOT BRAKING PUMP D15.8X38 OIL MIN.	1
018	603.08025.86	SCREW DIN933 M8x25	2
019	46.01065.01	FITTING SCREW SIMPLE M10x1	1
020	106.10000.20	WASHER CU 10x16x1,5 DIN7603A	1
021	20.03075.00	FITTING O/H/H 16X16X50	1
022	20.03072.00	PRESSURE SWITCH 1/8` BSPT 40BAR	1



# 06.STEERING

## 01.HYDRAULIC STEERING

CHASSIS: 0

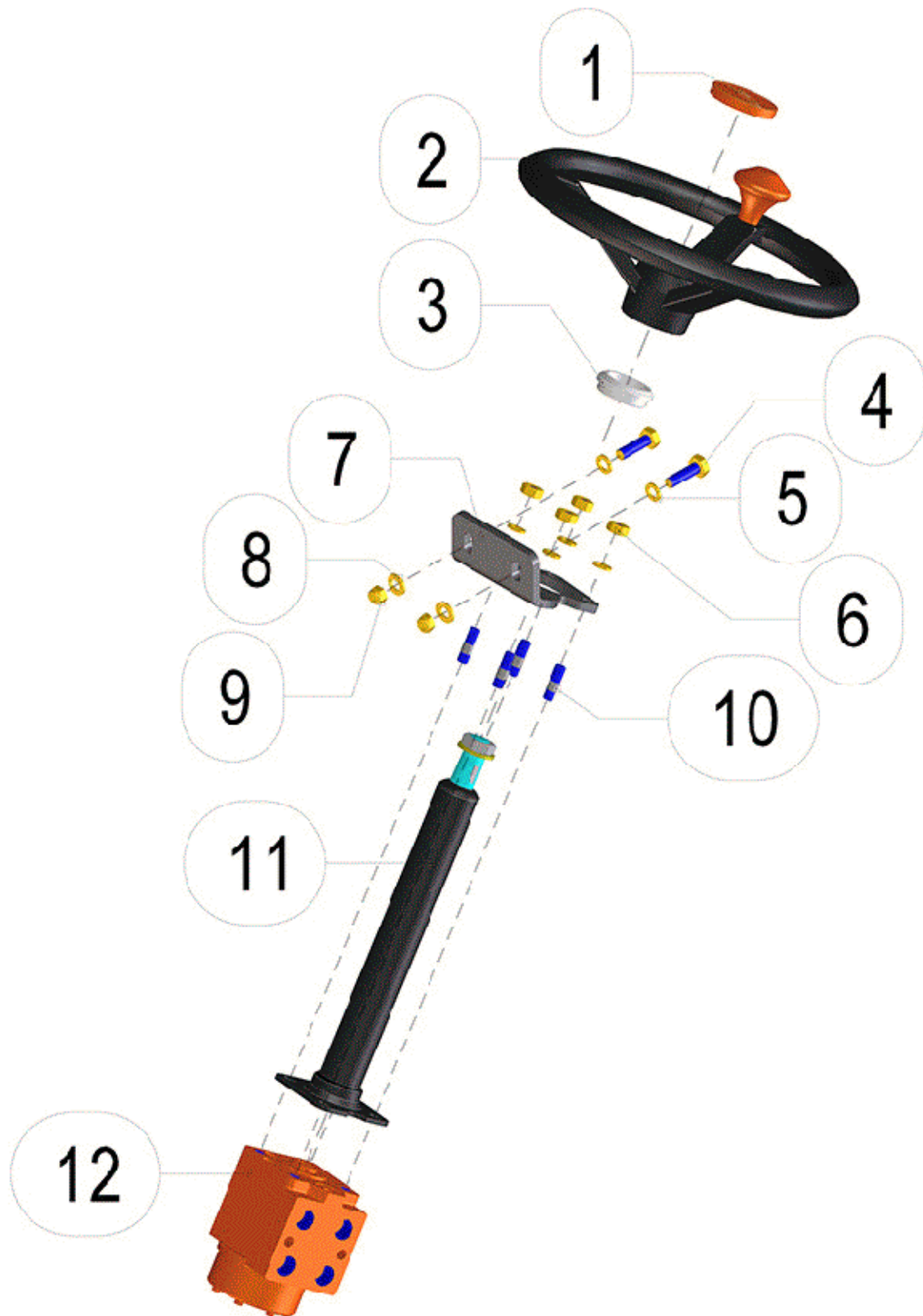


FIGURE	REFERENCE	DENOMINATION	AMOUNT
--------	-----------	--------------	--------

001	00.00626.03	TRIM	1
002	15.01016.01	STEERING WHEEL D21-315 WITH POMMEL	1
003	15.20727.00	NYLON BEARING 16x38x52	1
004	603.10035.86	SCREW DIN933 M10x35	2
005	105.10000.66	WASHER DIN7980 D10	6
006	701.10000.66	NUT DIN934 M10x1.5	4
007	35.06020.00	STEERING SUPPORT 49X100X115	1
008	101.10000.66	WASHER DIN125 D10	2
009	711.10000.66	NUT DIN982 M10x1.5	2
010	15.00435.01	STUD DIN938 33 M10x1.5	4
011	35.06010.00	STEERING COLUMN 38X300	1
012	10.00685.02	HYDROSTATIC STEERING 50 CC	1

# 07.WHEELS

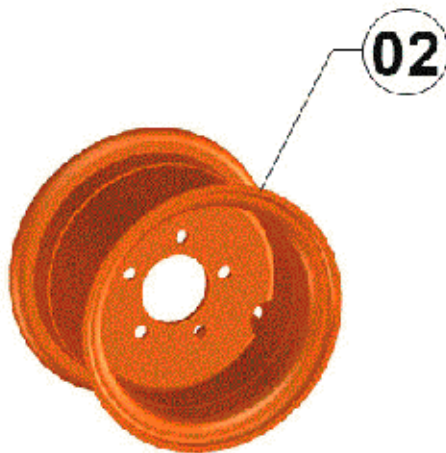
## 01.WHEELS

CHASSIS: 0



01

PATRÓN /PATTERN



02

6,5 bar  
96 P.S.I.  
650 kPa

01.12.107.01

FIGURE	REFERENCE	DENOMINATION	AMOUNT
001A	35.07020IZ00	LEFT WHEEL 27X10-12	2
001B	35.07020DE00	RIGHT WHEEL 27x10-12	2
002	35.07022.00	RIM 8.00G-12"	4

# 07.WHEELS

## 01.WHEELS

CHASSIS: 69246



FIGURE	REFERENCE	DENOMINATION	AMOUNT
001L	35.07030IZ00	LEFT COMPLETE WHEEL 11.0/65X12 OFF.16 OPEN CENTER	4
001R	35.07030DE00	RIGHT COMPLETE WHEEL 11.0/65X12 OFF.16 OPEN CENTER	4
002	17.07031.00	RIM 7.00X12	2

# 07.WHEELS

## 01.WHEELS

CHASSIS: 73932



FIGURE	REFERENCE	DENOMINATION	AMOUNT
001L	35.07030IZ01	LEFT WHEEL MOUNTED 11.0/65 X 12 OFF.0	2
001R	35.07030DE01	RIGHT WHEEL MOUNTED 11.0/65 x 12 OFF.0	2
002	17.07031.01	WHEEL 7.00 X 12 OFFSET 0	4

## 08.MACHINE BODY

### 01.PROTECTORS

CHASSIS: 0

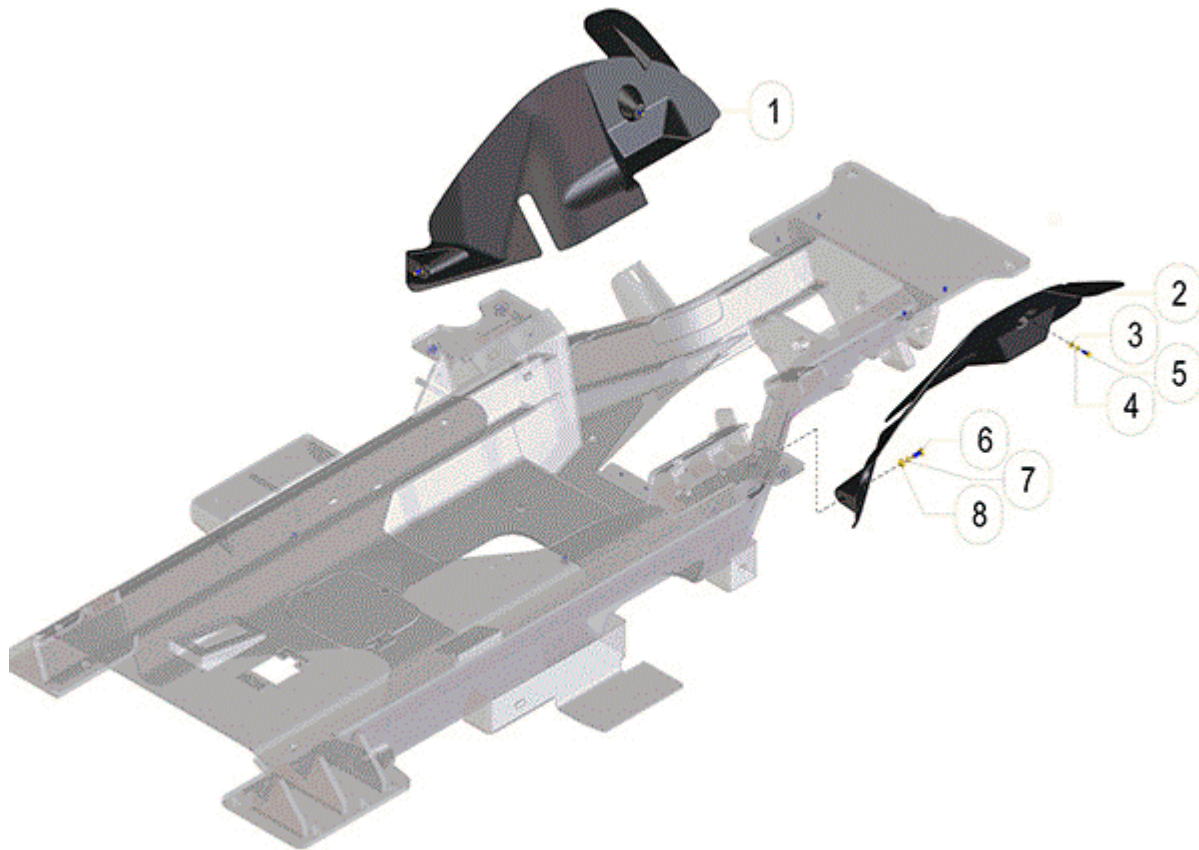


FIGURE	REFERENCE	DENOMINATION	AMOUNT
001	35.08020.00	RIGHT GUARD 726X315X3	1
002	35.08021.00	LEFT GUARD 726X315X3	1
003	101.06000.66	WASHER DIN125 D6	2
004	104.06000.00	WASHER DIN7980 D6	2
005	603.06015.86	SCREW DIN933 M6x15	2
006	603.08020.86	SCREW DIN933 M8x20	2
007	104.08000.00	WASHER DIN7980 D8	2
008	101.08000.66	WASHER DIN125 D8	2

# 08.MACHINE BODY

## 02.CABIN

CHASSIS: 0

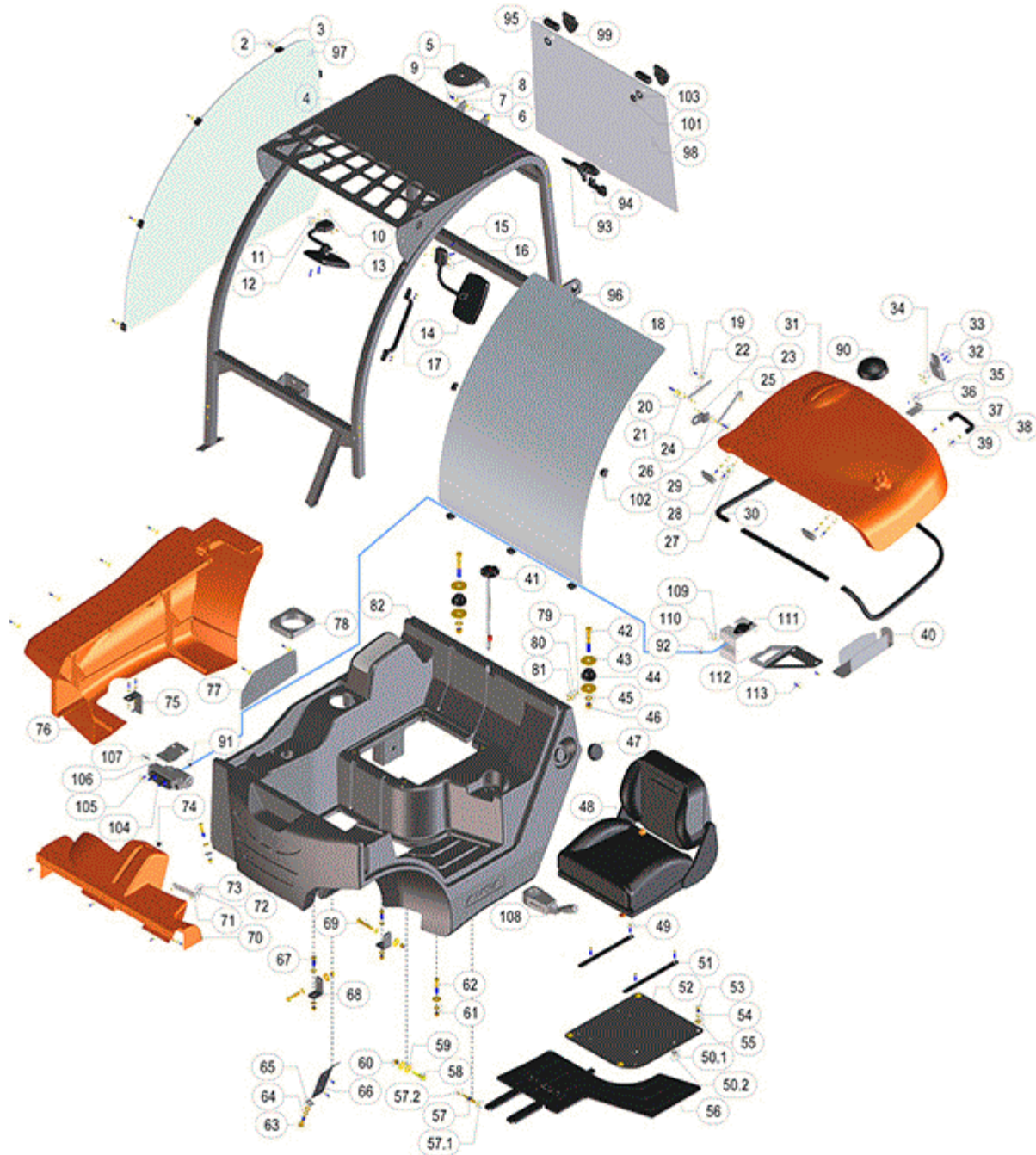


FIGURE	REFERENCE	DENOMINATION	AMOUNT
002	619.05016.86	SCREW DIN7971 4.8X16	13
003	112.05000.66	WASHER DIN9021 D5	6
004	35.08150.00	DRIVER`S PROTECTOR 1425X1377X920	1
005	70.08106.01	PIN SUPPORT 170X150X2	1
006	720.08000.66	NUT DIN985 M8 AUTOLOCKING	2

007	116.08000.00	WASHER DIN125 A D8	2
008	101.08000.66	WASHER DIN125 D8	6
009	603.08025.86	SCREW DIN933 M8x25	4
010	711.06000.66	NUT DIN982 M6	13
011	711.05000.66	NUT DIN982 M5	8
012	101.05000.66	WASHER DIN125 D5	13
013	09.11013.00	REARVIEW MIRROR 142X208	1
014	09.11009.00	REARVIEW MIRROR COMPLETE ASSY	1
015	603.06035.86	SCREW DIN933 M6x35	4
016	601.05015.86	SCREW 6X10 ALLEN C/CYLINDR.	4
017	46.09991.01	HANDLE 327x47x20	1
018	603.06020.86	SCREW DIN933 M6x20	3
019	101.06000.66	WASHER DIN125 D6	21
020	112.06000.66	WASHER DIN9021 D6	8
021	701.06000.66	NUT DIN934 M6X1	2
022	62.21532.00	TIE ROD 4x15x150	1
023	35.08175.00	SUPPORT 85X45X20	1
024	104.06000.00	WASHER DIN7980 D6	12
025	62.21531.00	TIE ROD 4x15x177	1
026	603.06030.86	SCREW DIN933 M6x30	2
027	630.06025.96	SCREW ISO7380 M6x25	4
028	630.06015.96	SCREW ISO7380 M6x15	14
029	35.08172.00	HINGE 14X65X75	2
031	35.08170.01	ENGINE COVER	1
032	601.05025.86	SCREW DIN912 M5X25	4
033	70.08026.00	ENGINE COVER LOCKING	1
034	701.05000.66	NUT DIN934 M5x0.8	4
035	615.04012.66	SCREW M4x12 DIN84	2
036	104.04000.00	WASHER DIN7980 D4	2
037	35.08173.00	HITCH BRACKET 20X40X71	1
038	70.08025.00	HANDLE	1

## 08.MACHINE BODY

### 02.CABIN

CHASSIS: 0

FIGURE	REFERENCE	DENOMINATION	AMOUNT
039	603.08015.86	SCREW DIN933 M8x15	2
040	35.08025.00	PIN SUPPORT 300X80X70	1
041	64.02401.01	FUEL LEVEL 400MM	1



042	604.16110.86	SCREW DIN931 M16x110	2
043	43.70833.00	WASHER 65X16X5	4
044	43.70831.00	SHOCK DAMPER	2
045	101.16000.66	WASHER DIN125 D16	21
046	711.16000.66	NUT DIN982 M16 8.8 K	2
047	35.08101.00	FILLING TANK CAP D60	1
048	10.11003.02	DRIVER`S SEAT WITH SENSOR	1
049	603.08030.86	SCREW DIN933 M8X30	4
050.1	112.08000.66	WASHER DIN9021 D8	4
050.2	711.08000.66	NUT DIN982 M8	4
051	10.11081.00	PIN SUPPORT 6X20X317	2
052	35.08114.01	SEAT SUPPORT 450X400X3	1
053	630.10020.96	SCREW ISO7380 M10x20	4
054	104.10000.00	WASHER DIN7980 D10	4
055	112.10000.66	WASHER DIN9021 D10	4
056	35.08105.00	CARPET 743X670X12	1
057	52.00110.02	FITTING M/M 14x9	1
057.1	107.14000.10	WASHER AL 14x20x1.5	1
057.2	948.01308.00	SPRING CLAMP Ø13	1
058	604.12060.86	SCREW DIN931 M12x60	2
059	112.12000.66	WASHER DIN9021 D 12X36	5
060	711.12000.66	NUT DIN982 M12	8
061	101.12000.66	WASHER DIN125 D12	10
062	604.12070.86	SCREW DIN931 M12x70	1
063	604.12050.86	SCREW DIN931 M12x50	4
064	105.12000.66	WASHER DIN7980 D12	1
065	00.00184.00	WASHER DIN434 14X30X4.9	3
066	35.08154.00	METALLIC PLATE 2X70X237	1
067	604.12035.86	SCREW DIN931 M12x35	2
068	35.08113.00	ANGLE SUPPORT 40X56X80	2
069	604.12080.86	SCREW DIN931 M12x80	1
070	35.08103.00	DASHBOARD 855X341X316	1
071	35.08115.00	DASHBOARD PLATE 1.5x32x119	1

## 08.MACHINE BODY

### 02.CABIN

CHASSIS: 0

FIGURE	REFERENCE	DENOMINATION	AMOUNT
072	104.05000.00	WASHER DIN7980 D5	2

073	630.05015.96	SCREW ISO7380 M5x15	2
074	02.32018.00	PLASTIC D18 CAP	2
075	35.08111.00	SUPPORT 105X94X65	1
076	35.08102.02	LATERAL COVER 1246X618X300	1
077	35.08112.00	DISTRIBUTOR COVER 335X156X2	1
078	35.08157.00	JOYSTICK PROTECTOR	1
079	80.06041.00	FITTING SCREW SIM. M8x1x16	1
080	107.08000.10	WASHER AL 8x13.5x1.5	2
081	45.04107.00	FITTING O/TB D3-D8.2	1
082	35.08100.01	SEAT BASE + 55L FUEL TANK	1
090	45.01202.00	AIR FILTER PROTECTOR	1
091	13.08204.00	CLEAN WATER GROMMET	1
092	16.01155.00	GROMMET D11XD15XD19X4X8	1
093	35.08201.00	WINDOW OPENING DRIVE LEVER	1
094	35.08206.00	TOP HANDLE	1
095	35.08208.00	HINGE SUPPLEMENT	2
096	35.13050.00	WINDSCREEN	1
097	35.13051.00	RIGHT SIDE GLASS WINDOW	1
098	35.13052.00	REAR GLASS WINDOW	1
099	MA.10006.00	GLASS HINGE	2
101	MA.10027.00	INSERTED NUT M8	2
102	MA.10030.00	NUT DIN1587	11
103	MA.10050.00	RUBBER WASHER 20X40	2
104	MA.20080.00	SCREEN WIPERS ENGINE	1
105	603.06020.86	SCREW DIN933 M6x20	1
106	35.08204.00	SCREEN WIPERS SUPPORT	1
107	46.02300.00	CHECK VALVE D5X45	1
108	35.11160.00	LIGHTS AND WIPERS LEVER CONTROL	1
109	101.06000.66	WASHER DIN125 D6	2
110	711.06000.66	NUT DIN982 M6	2
111	46.08621.00	SCREEN WIPER PUMP TANK	1
112	35.13055.01	ANGLE SUPPORT 90X170X260	1
113	603.06020.86	SCREW DIN933 M6x20	2

# 08.MACHINE BODY

## 03.COUNTERWEIGHT

CHASSIS: 0

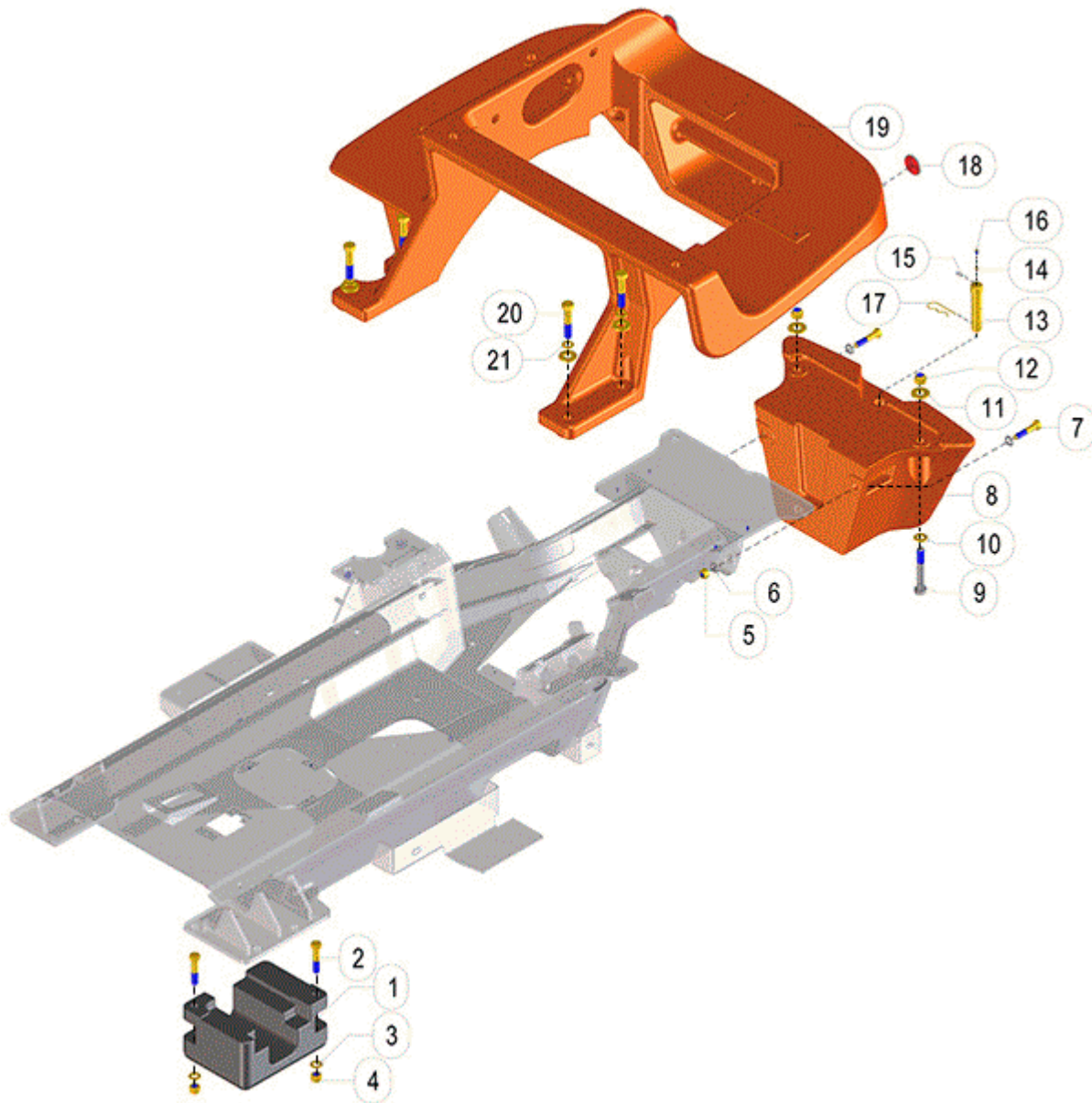


FIGURE	REFERENCE	DENOMINATION	AMOUNT
001	35.08012.00	COUNTERWEIGHT 50KG	1
002	604.16075.86	SCREW DIN931 M16x75	2
003	101.16000.66	WASHER DIN125 D16	2
004	711.16000.66	NUT DIN982 M16 8.8 K	2
005	711.14000.66	NUT DIN982 M14 8.8 K	2
006	101.14000.66	WASHER DIN125 D14	4
007	604.14070.86	SCREW DIN931 M14x70	2
008	35.08011.00	COUNTERWEIGHT 218KG	1

009	604.18120.86	SCREW DIN931 M18x120	2
010	101.18000.66	BEARING DIN125 D18	2
011	15.00561.00	WASHER DIN125 20.5x45x5	6
012	711.18000.66	NUT DIN982 M18	2
013	15.00835.00	AXLE CPA/GRA 25x30x135	1
014	701.05000.66	NUT DIN934 M5x0.8	1
015	15.00834.00	CHAIN	1
016	603.05010.86	SCREW DIN933 M5x10	1
017	15.00836.00	PIN DIN11024 R4	1
018	70.08028.00	RETROREFLECTOR	2
019	35.08010.01	COUNTERWEIGHT T144H 510KG	1
020	604.18090.86	SCREW DIN931 M18x90	4
021	104.18000.00	WASHER DIN7980 D18	4

# 09.LIFTING SYSTEM

## 01.INNER TELESCOPIC ARM

CHASSIS: 0

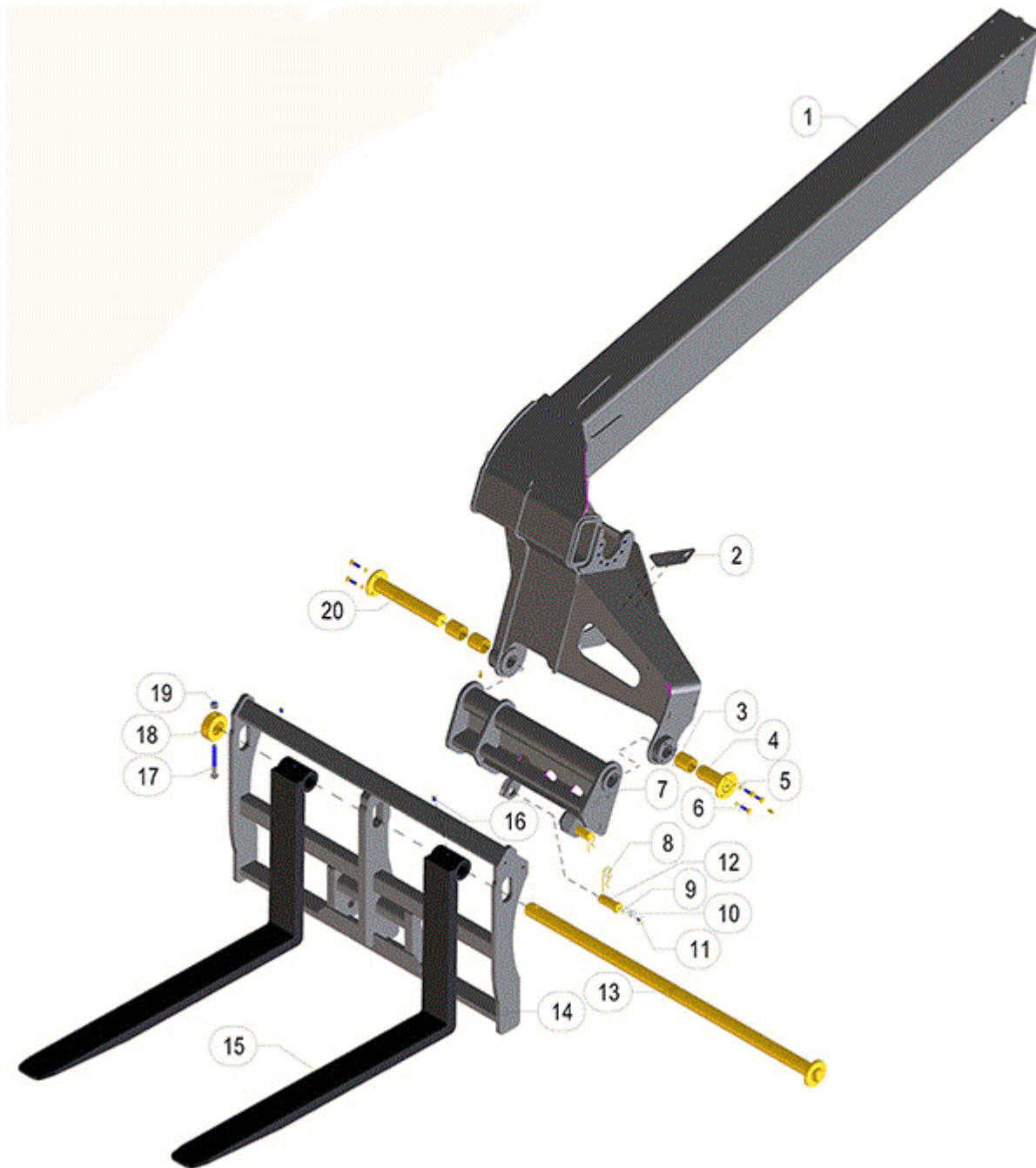


FIGURE	REFERENCE	DENOMINATION	AMOUNT
001	35.09700.01	INNER MAST 2341X805X633	1
002	35.13337.00	SUPPORT 110X50X65	1
003	949.04050.00	PLAIN BEARING 40X44X50 DIN 1494	3
004	35.09912.00	AXLE D40X105XD80	1
005	120.00008.66	NORD-LOCK SAFETY WASHER	6

006	604.08030.86	SCREW DIN931	6
007	35.09800.00	LIFTING ROCKER FRAME 572X241X226	1
008	15.00836.00	PIN DIN11024 R4	2
009	701.05000.66	NUT DIN934 M5x0.8	2
010	15.00834.00	CHAIN	2
011	603.05010.86	SCREW DIN933 M5x10	2
012	35.09304.00	AXLE 30X25X72	2
013	35.09360.00	FORK JOINT BAR D40.5XD80X30	1
014	35.09300.01	FORK CARRIAGE T133/144	1
015	35.09320.00	FORK ARM ARTICULATED 10001000	2
016	612.10012.96	SCREW DIN913 M10X12 12K	2
017	604.12100.86	SCREW DIN931 M12x100	1
018	35.09361.00	RING D40,5XD80X30	1
019	711.12000.86	NUT DIN982 M12 C8	1
020	35.09913.00	AXLE D40X260XD80	1

**09.LIFTING SYSTEM**  
**02.OUTER TELESCOPIC ARM**  
 CHASSIS: 0

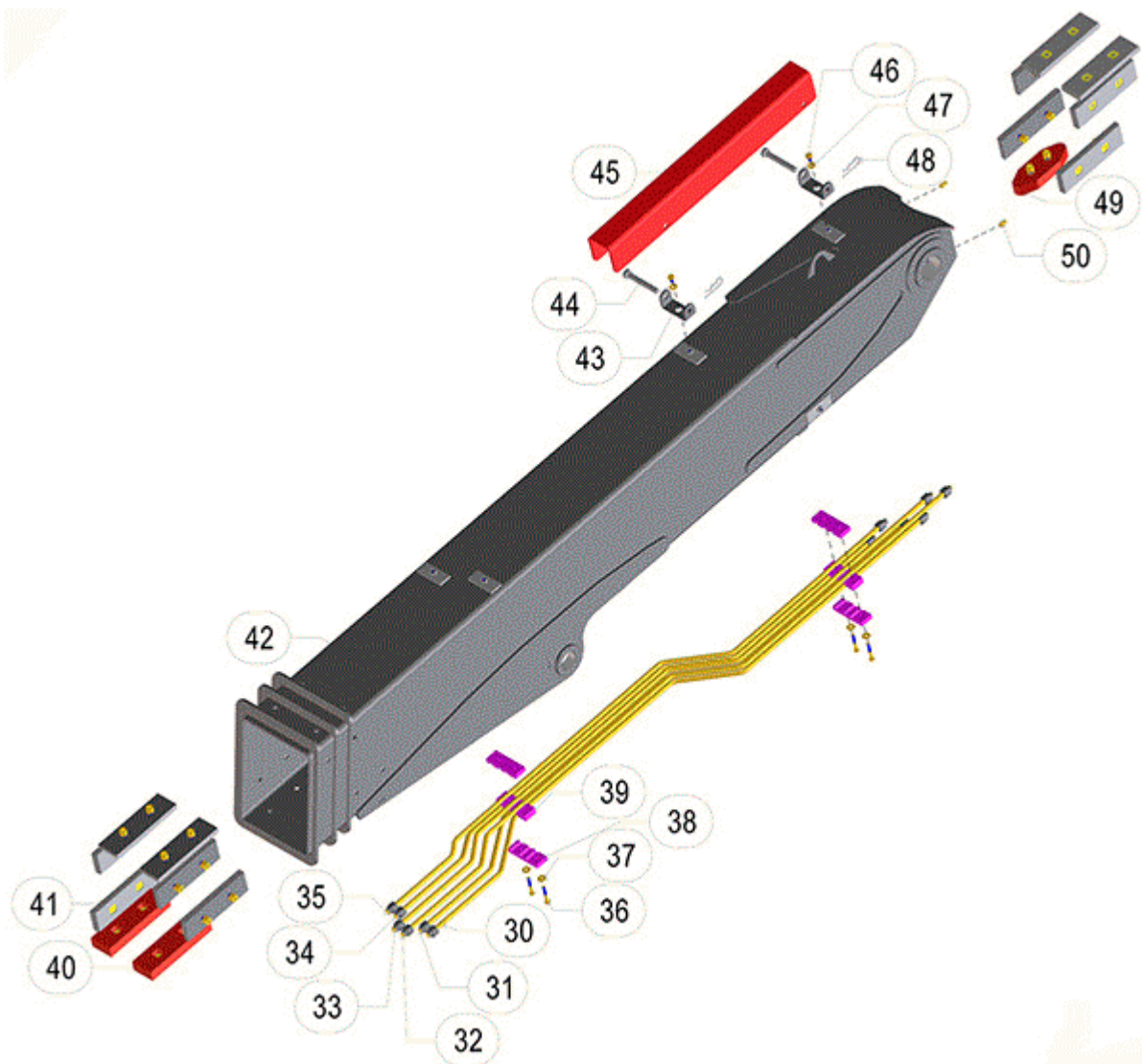


FIGURE	REFERENCE	DENOMINATION	AMOUNT
030	35.10295.00	RIGID TUBE 1496 M16X1.5-M16X1.5	1
031	35.10294.00	RIGID TUBE 1459 M16X1.5-M16X1.5	1
032	35.10292.00	RIGID TUBE 1601 M16X1.5-M16X1.5	1
033	35.10291.00	RIGID TUBE 1564 M16X1.5-M16X1.5	1
034	35.10293.00	RIGID TUBE 1384 M16X1.5-M16X1.5	1
035	35.10290.00	RIGID HOSE 1423 M16X1.5-M16X1.5	1
036	604.06045.86	SCREW DIN931 M6x45	4
037	112.06000.66	WASHER DIN9021 D6	4
038	35.09908.00	TUBES CLAMP 85X30X11	4
039	35.09909.00	TUBES CLAMP 85X30X16	2

040	35.09915.00	PAD 180X55X26 & NUTS SET	2
041	32.95050.01	PAD 180X55X13 & NUTS SET	12
042	35.09600.00	OUTER MAST 1988X440X248	1
043	35.09217.00	PIN SUPPORT 74X38X30	2
044	35.09216.00	AXLE D12 L94	2
045	35.09215.00	PROTECTOR 600X77X65	1
046	603.08010.86	SCREW DIN933 M8x10	2
047	101.08000.66	WASHER DIN125 D8	2
048	15.00836.01	PIN DIN11024	2
049	35.09920.00	PAD & NUTS SET	1
050	901.08000.33	GREASER DIN71412-A M8x1,25	2
051	32.95051.00	SPACER 180X55X1	20
052	120.00010.66	SAFETY WASHER Ø10	30
053	601.10020.86	SCREW DIN912 M10x20	30



**09.LIFTING SYSTEM**  
**03.TELESOPIC ARM CYLINDERS**  
 CHASSIS: 0

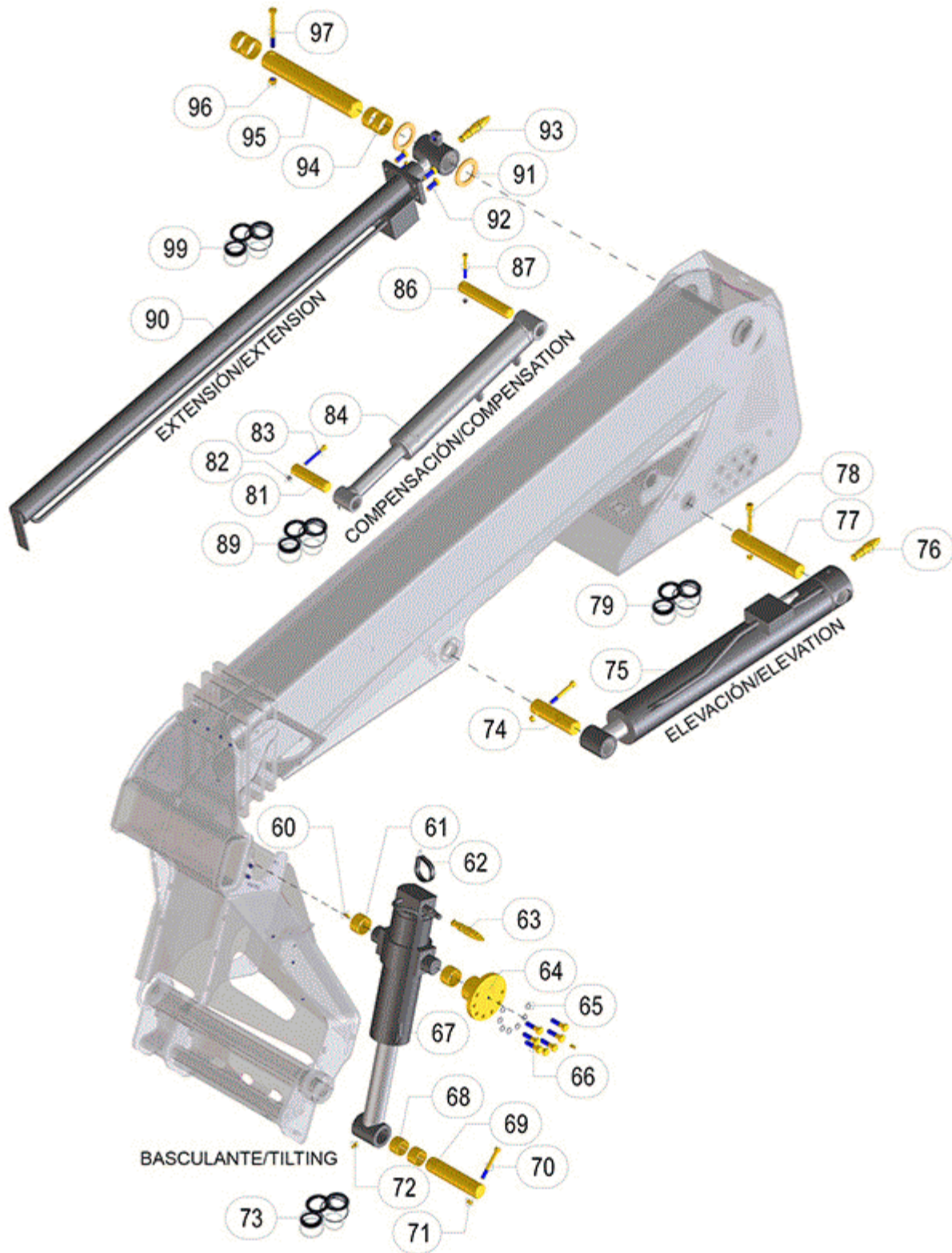


FIGURE	REFERENCE	DENOMINATION	AMOUNT
--------	-----------	--------------	--------

060	901.08000.33	GREASER DIN71412-A M8x1,25	2
061	949.04530.00	PLAIN BEARING 45X50X30 DIN 1494	2
062	830.05006.00	HOSE TIE D50X6	1
063	32.10401.03	VALVE PRESSURE 300 BAR	1
064	35.09910.00	PLANE BEARING D130XD50X67	1
065	104.12000.00	WASHER DIN7980 D12	7
066	604.12045.96	SCREW DIN931 M12x45	7
067	35.09503.01	CYLINDER D/E D90XD55X236	1
069	35.09911.00	AXLE D40X181	1
070	601.10080.86	SCREW DIN 912 M10X80	2
071	711.10000.66	NUT DIN982 M10x1.5	3
072	901.08001.33	GREASER DIN71412-A M8X1	1
074	35.09905.00	AXLE D40X147	1
075	35.09501.01	CYLINDER D/E D90XD50X580	1
076	32.10401.03	VALVE PRESSURE 300 BAR	1
077	35.09903.00	AXLE CIL/CPA D40X321	1
078	601.10070.86	SCREW DIN912 M10X70	1
081	35.09906.00	AXLE D30X125	1
082	711.08000.66	NUT DIN982 M8	2
083	601.08070.86	SCREW DIN912 M8x70	1
084	35.09504.01	CYLINDER D/E D63xD40x335	1
086	35.09904.00	AXLE D30X177	1
087	601.08065.86	SCREW DIN912 M8x65	1
090	35.09502.02	CYLINDER D/E D63.5XD50X1239	1
091	35.09917.00	WASHER D80XD50X2.5	2
092	603.12030.86	SCREW DIN933 M12x30	4
093	32.10401.01	BRAKING SIMPLE VALVE 260 BAR	1
094	949.05025.00	PLAIN BEARING 50X55X25 DIN 1494	4
095	35.09901.00	AXLE D50X323	1
096	711.12000.66	NUT DIN982 M12	1
097	604.12110.86	SCREW DIN931 M12x110	1

**09.LIFTING SYSTEM**  
**04.TELESCOPIC ARM SUPPORT**  
 CHASSIS: 0

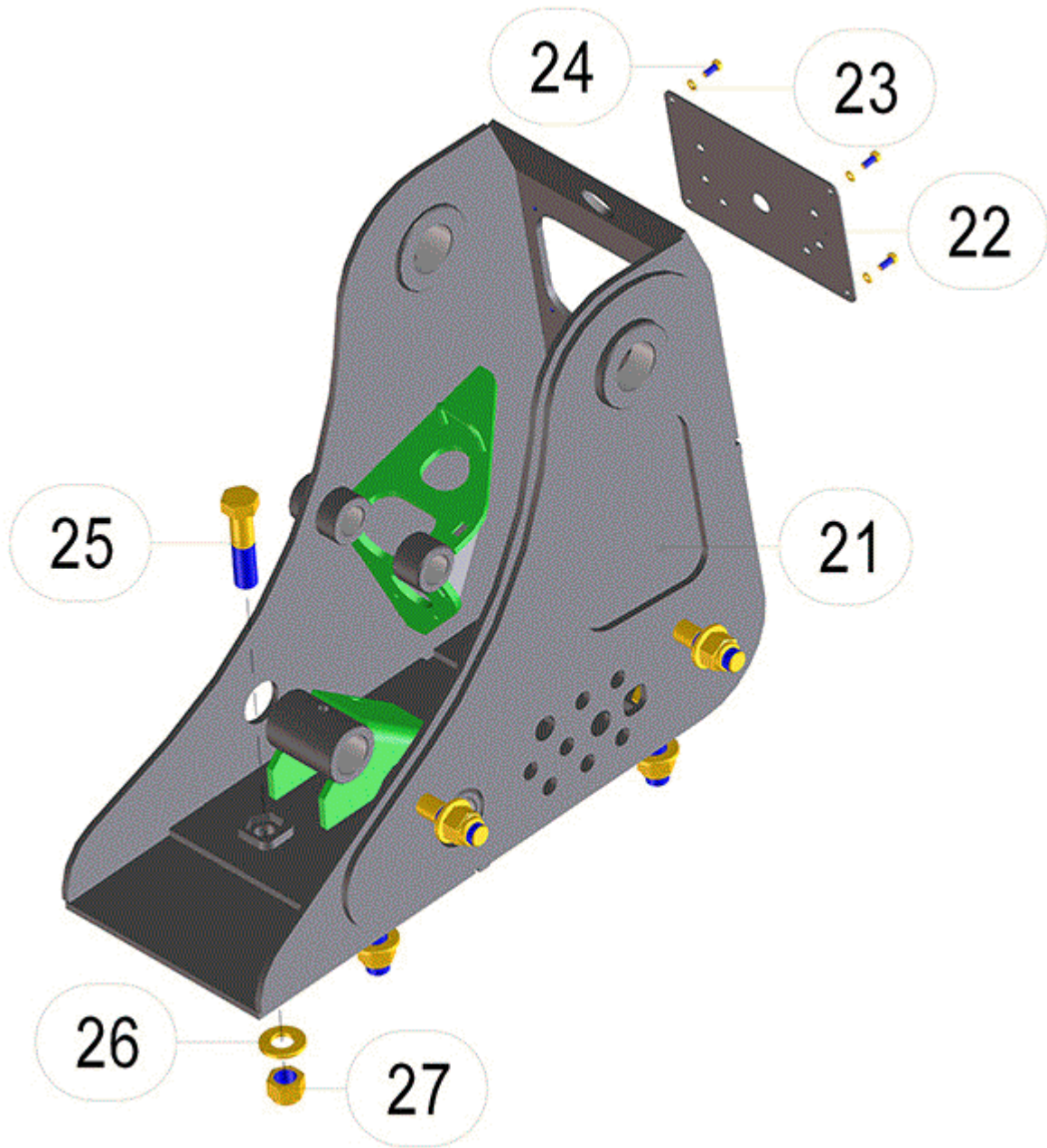


FIGURE	REFERENCE	DENOMINATION	AMOUNT
021	35.09500.01	ARM SUPPORT 686X677X315	1
022	35.09902.00	PIN SUPPORT 229X149X2	1
023	104.06000.00	WASHER DIN7980 D6	4
024	603.06015.86	SCREW DIN933 M6x15	4
026	15.00561.01	WASHER 22.5X45X5	6
027	720.22000.86	NUT DIN985 M22X1.5	6

## 10.HYDRAULIC SYSTEM

### 01.PUMP, FILTER & JOYSTICK

CHASSIS: 0

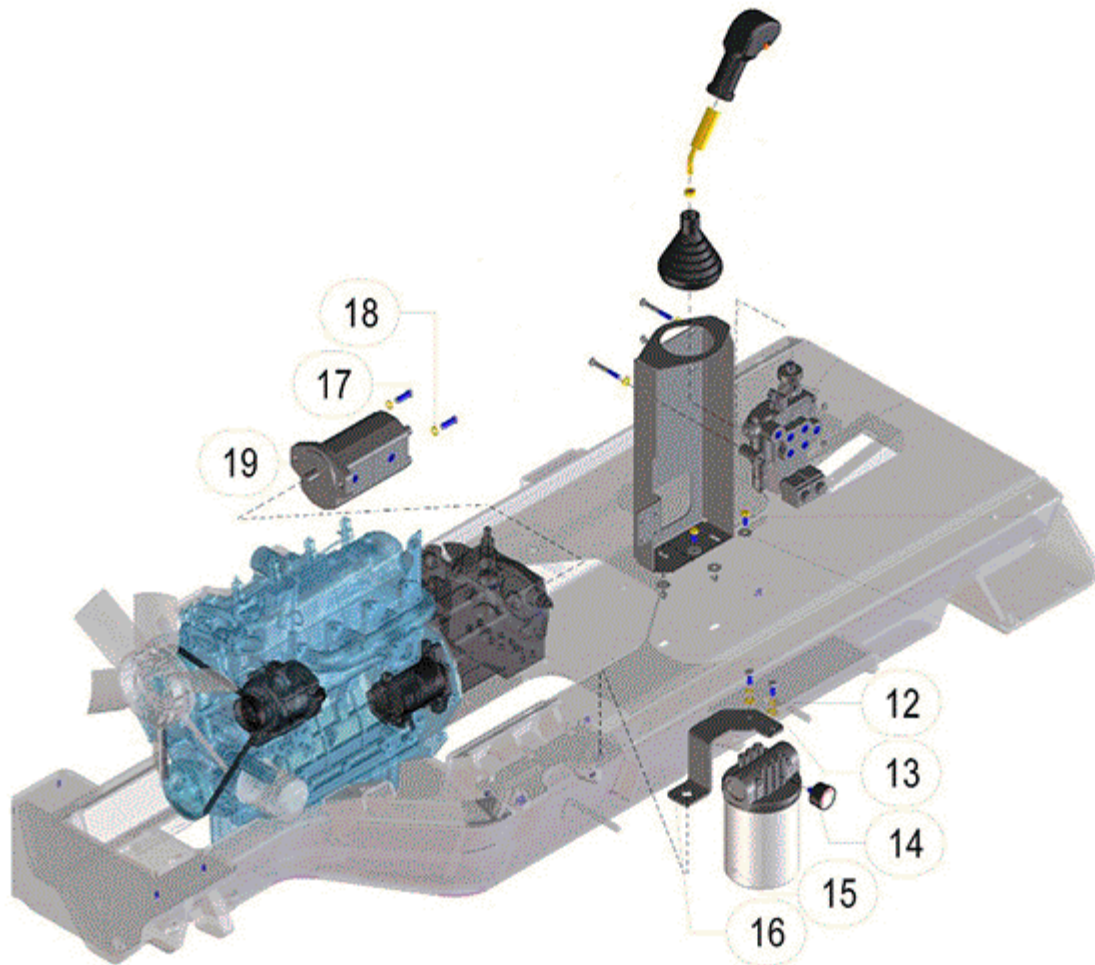


FIGURE	REFERENCE	DENOMINATION	AMOUNT
012	104.08000.00	WASHER DIN7980 D8	2
013	101.08000.66	WASHER DIN125 D8	5
014	70.10049.00	DEPRESSION INDICATOR	1
015	70.10051.00	COMPLETE OIL FILTER ASSY	1
016	35.10312.00	ASPIRATION FILTER SUPPORT 110X110X174	1
017	630.10030.96	SCREW ISO7380 M10x30	4
018	104.10000.00	WASHER DIN7980 D10	2
019	35.10010.00	OIL PUMP 12L-9L	1

# 10.HYDRAULIC SYSTEM

## 02.VALVES & CONNECTORS

CHASSIS: 0

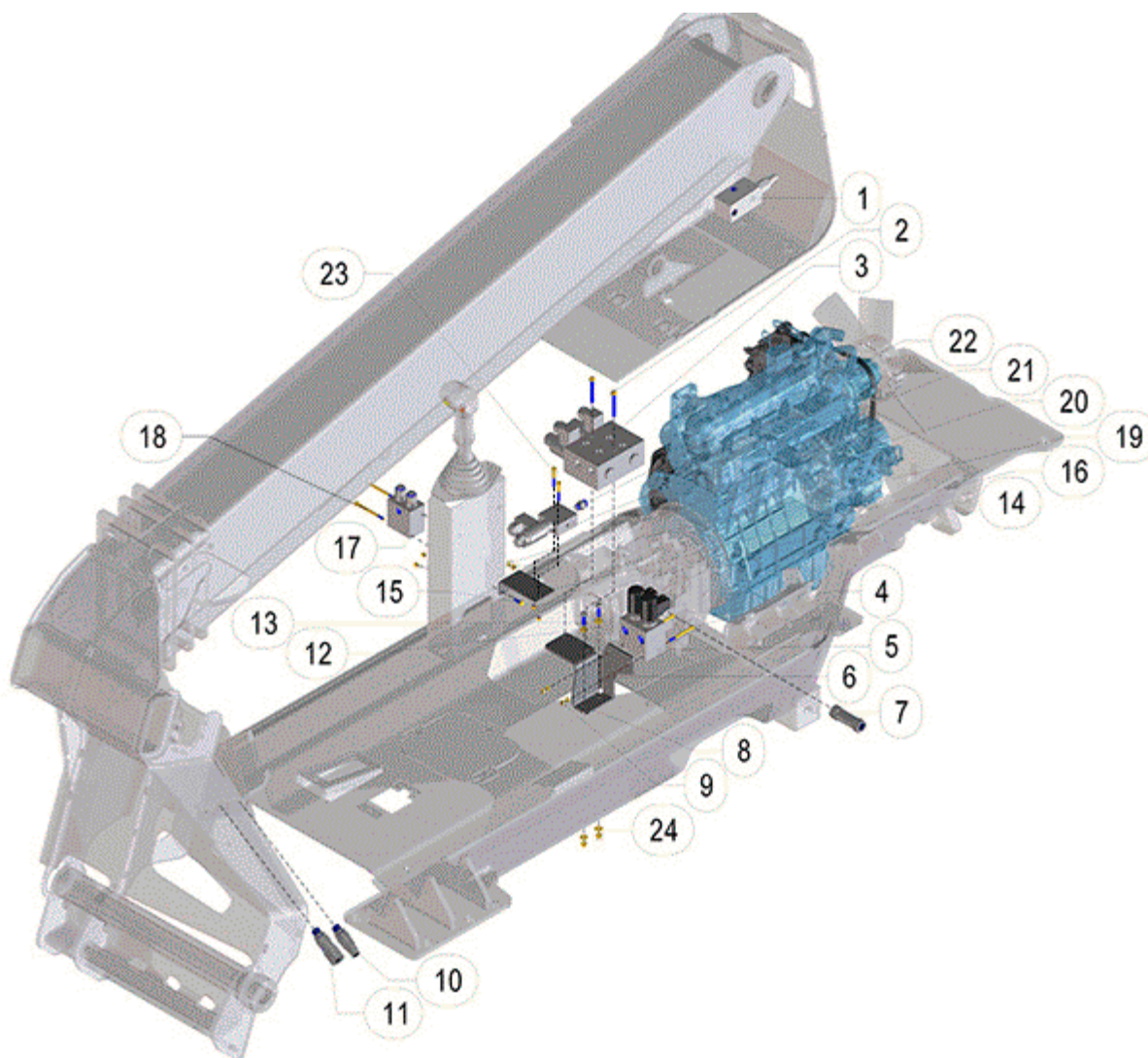


FIGURE	REFERENCE	DENOMINATION	AMOUNT
001	35.10020.00	VALVE OVERCENTER 300BAR 50L	1
002	630.08060.96	SCREW ISO7380 M8x60	2
003	42.70101.00	SHUTTLE VALVE 8 WAYS	1
004	601.06070.86	SCREW DIN912 M6x70	2
005	35.10060.00	ELECTROVALVE 2 WAYS	1
006	35.10061.00	FIXATION SUPPORT VALVE 87X140X199	1
007	52.01450.00	PRESSURE VALVE	1
008	104.06000.00	WASHER DIN7980 D6	4
009	701.06000.66	NUT DIN934 M6X1	4
010	46.10902.00	ECOLOGICAL CONNECTOR M18	1
011	46.10907.00	ECOLOGICAL CONNECTOR M18X1	1

012	101.08000.66	WASHER DIN125 D8	4
013	603.08025.86	SCREW DIN933 M8x25	2
014	711.06000.66	NUT DIN982 M6	4
015	603.06020.86	SCREW DIN933 M6x20	2
016	35.10311.00	ANGLE SUPPORT 40X60X112	1
017	35.10040.00	UNIDIRECTIONAL LIMITING DOUBLE VALVE	1
018	601.06080.86	SCREW DIN912 M6x80	2
019	701.06000.66	NUT DIN934 M6X1	4
020	104.06000.00	WASHER DIN7980 D6	4
021	20.05005.00	SELECTION VALVE 3 WAYS	1
022	35.10198.00	FITTING M/M 1/4 BSP-M16x1.5 CHIC	1
023	604.06045.87	SCREW M6X45 DIN931	2

# 10.HYDRAULIC SYSTEM

## 03.HYDRAULIC SCHEMATICS

CHASSIS: 0

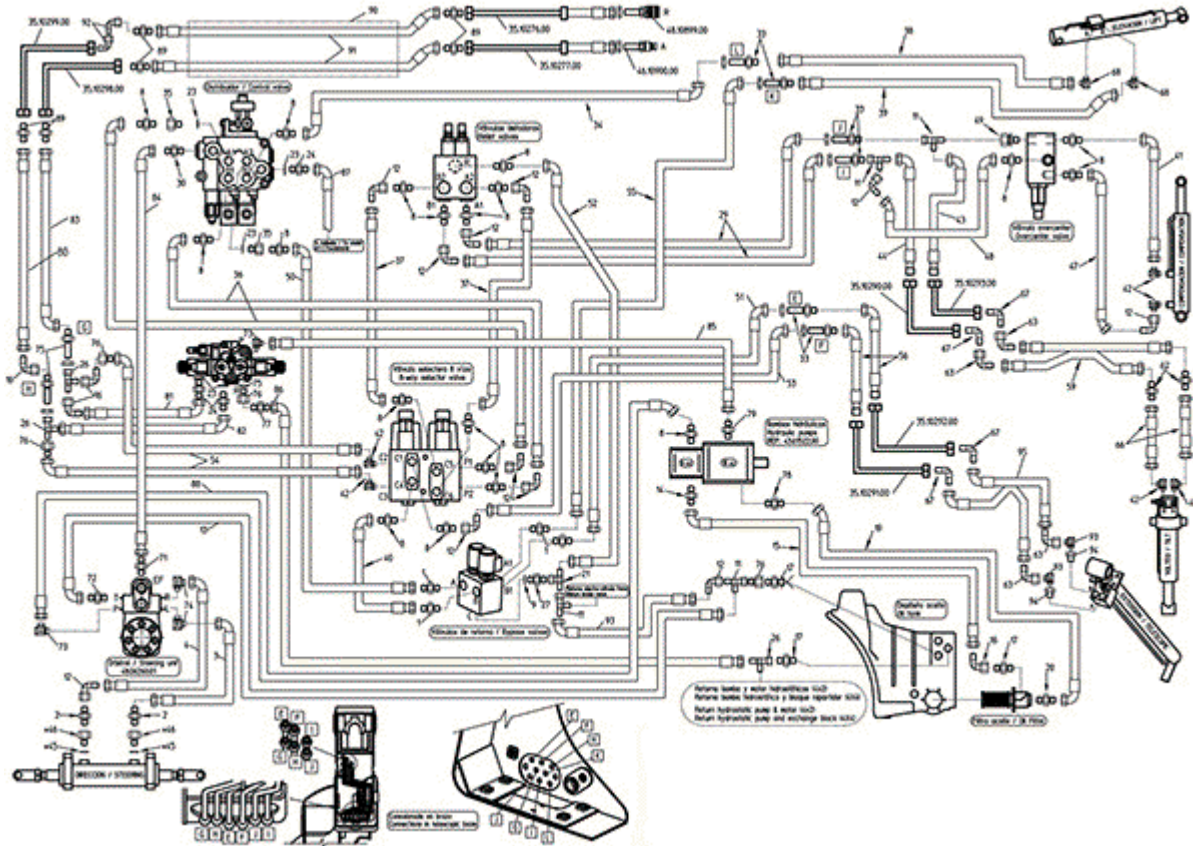


FIGURE	REFERENCE	DENOMINATION	AMOUNT
001	70.10229.00	FITTING M/M M18x1/2BSP	4
002	70.10238.00	NIPPLE M/M M18X1,5 - 1/4GAS	2
003	35.10201.00	HOSE R1T3/8 TL-C90 M18X1,5 267	1
004	35.10202.00	HOSE R1T3/8 TL-C90 M18X1,5 272	1
008	70.10222.00	FITTING M/M M18x3/8BSP	19
009	45.01423.00	GASKET MET. BUNA	1
011	70.10223.00	FITTING M/M/TL M18x1,5	4
012	64.10308.00	ELBOW C90M/TL NIPPLE M18X1.5	12
013	35.10204.00	O-RING DIN3770 196.4X3.5	1
014	70.10230.00	FITTING M/M M26x1,5- 1/2G	1
015	35.10246.00	TUBE R1T5/8 TL-C90 M26X1,5 430	1
016	46.10839.00	FITTING C90M/TL M26X1.5	4
017	70.10207.00	FITTING M/M M26x3/4BSP	3
019	35.10247.00	HOSE R1T3/4 C45-C90 M30X2 370	1
020	64.10301.00	FITTING M/M M16X1,5 - 1/4GAS	1
021	70.10225.00	NIPPLE FORT M/TL/M M18X1,5	1

023	08.00317.00	METALLIC GASKET BUNA D3/8	5
024	46.58083.00	GASKET MET. BUNA	3
026	70.10234.00	CLAMP SAE6000 3/4	3
027	46.01258.00	RACCORD M/M 3/4BSP-M18	1
029	35.10246.00	TUBE R1T5/8 TL-C90 M26X1,5 430	2
030	70.10253.00	FITTING M/M M22x3/8BSP	1
033	70.10255.00	TUBE R1T1/2 TL-C90 M22X1,5 415	6
034	35.10213.00	FITTING FORT M/M/TL M22	1
035	70.10219.00	FITTING M/M M22x3/8BSP	2
036	35.10225.00	TUBE R2T3/8 TL-C90 M18X1,5 680	2
037	35.10226.00	TUBE R2T3/8 TL-C90 M18X1,5 500	2
038	35.10227.00	TUBE R2T5/16 TL-TL M18X1,5 750	1
039	35.10228.00	TUBE R2T3/8 TL-C45 M18X1,5 750	1
040	35.10229.00	TUBE R2T3/8 TL-C90 M18X1,5 260	1
041	35.10230.00	TUBE R2T5/16 TL-C90 M18X1,5 7	1
042	64.10311.00	GASKET MET. BUNA	4
043	35.10231.00	TUBE R2T5/16 C90-MF M18-M16 72	1
044	35.10232.00	TUBE R2T5/16 C90-MF M18-M16 62	2
045	28.00341.00	METALLIC GASKET BUNA D1/4	2
046	42.00508.00	NIPPLE M/H	2

## 10.HYDRAULIC SYSTEM

### 03.HYDRAULIC SCHEMATICS

CHASSIS: 0

FIGURE	REFERENCE	DENOMINATION	AMOUNT
047	35.10233.00	TUBE R2T5/16 TL-C90 M18X1,5 53	1
048	35.10222.00	TUBE R2T3/8 TL-C90 M18X1,5 430	1
049	70.10237.00	FITTING M/TL 3/8GAS - M18x1,5	1
050	35.10234.00	TUBE R2T3/8 TL-C90 M18X1,5 840	1
051	35.10235.00	TUBE R2T3/8 TL-C90 M18X1,5 145	1
052	35.10236.00	TUBE R1T3/8 TL-C90 M18X1,5 670	1
053	35.10237.00	TUBE R2T3/8 TL-C90 M18X1,5 143	1
054	35.10238.00	TUBE R2T3/8 TL-C90 M18X1,5 148	2
055	35.13343.00	TUBE R2T3 / 8 TL-C90 M18 1300	1
056	35.10238.00	TUBE R2T3/8 TL-C90 M18X1,5 148	2
071	46.10824.00	FITTING M/M M22x1/2BSP	1
072	70.10222.00	FITTING M/M M18x3/8BSP	1
073	32.10078.00	RACOR C90MO/M 1/2"G-M22X1,5	2
074	64.10311.00	GASKET MET. BUNA	2



075	08.00316.00	METALLIC GASKET BUNA D1/2 G	3
076	57.10342.00	FITTING M/M M18X1.5-TL M26X1.5	3
077	64.10337.00		1
078	57.10307.00	FITTING M/M M30X2/3/4BSP	1
079	46.10824.00	FITTING M/M M22x1/2BSP	1
080	35.10205.00	TUBE R2T5/8" 540-TL-TL M26x1,5	1
081	35.10278.00	TUBE R2T5/8 C90-TL M26X1.5 100	1
082	35.10279.00	TUBE R2T5/8 C90-TL M26X1.5 115	1
083	35.10283.00	TUBE R2T5/8 C90-TL M26X1.5 550	1
084	35.10284.00	TUBE R2T5/8 C90-TL M26X1.5 550	1
085	35.10285.00	TUBE R2T5/8 TL-TL M26X1.5 350	1
086	35.10286.00	TUBE R1T3/4 TL-TL M26X1.5 850	1
087	35.10287.00	TUBE R1T5/8 TL-TL M26X1.5	1
088	35.10288.00	TUBE R2T3/8 C45M18x1.5 - TLM22	1
089	46.58062.00	FITTING M/M M30-M26	3

# 10.HYDRAULIC SYSTEM

## 04. DISTRIBUTOR

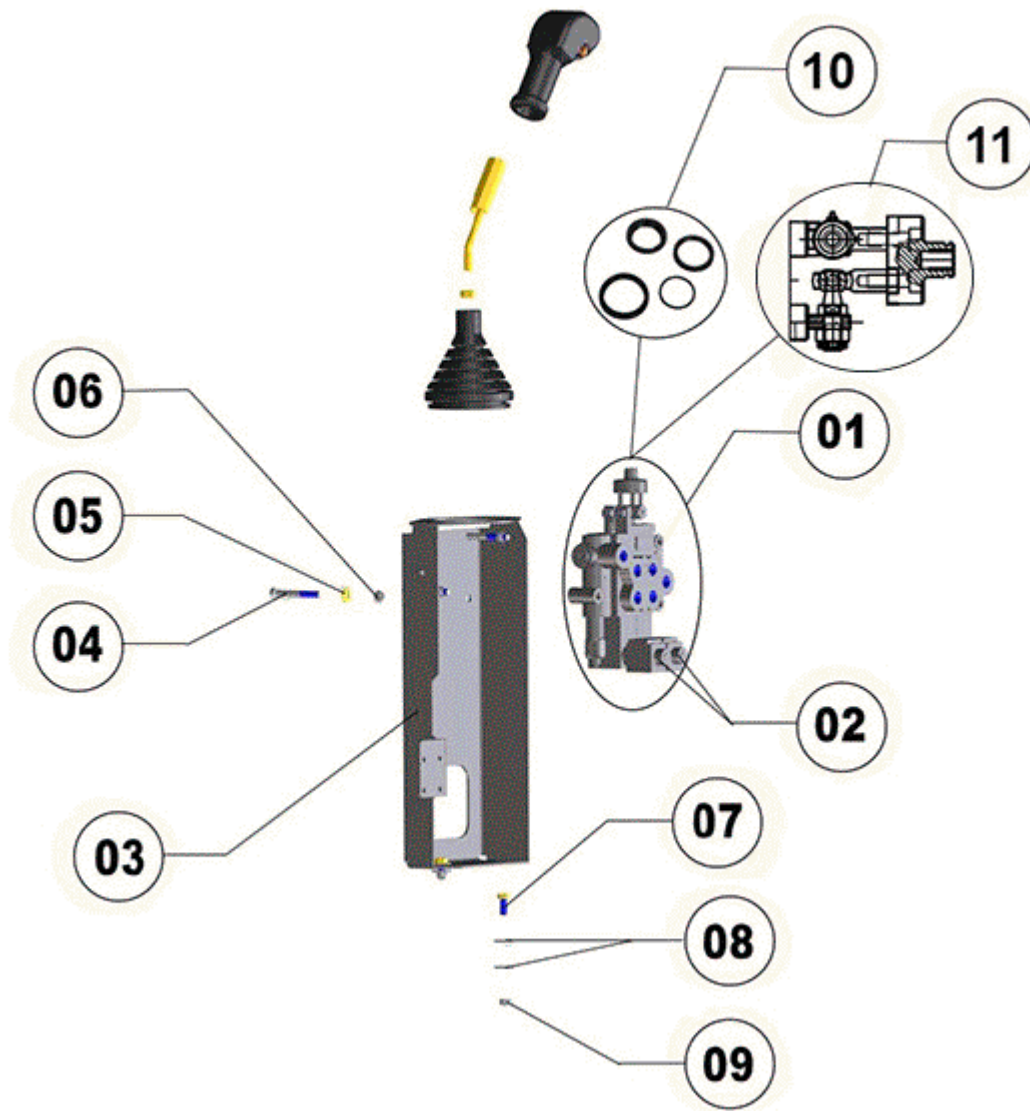


FIGURE	REFERENCE	DENOMINATION	AMOUNT
001	35.10031.00	DISTRIBUTOR 2E 40L XX 202	1
002	12.10351.00	COIL 14VDC 1.36A	2
003	35.10310.01	DISTRIBUTOR FIXATION SUPPORT	1
004	604.08065.86	SCREW DIN931 M8X65	3
005	101.08000.66	WASHER DIN125 D8	3
006	711.08000.66	NUT DIN982 M8	3
007	603.08020.66	SCREW DIN933	2
008	112.08000.66	WASHER DIN9021 D8	4
009	711.08000.66	NUT DIN982 M8	2
010	RQKD030202C	GASKET KIT	1

# 11. ELECTRIC INSTALLATION JOYSTICK

## 1 Full joystick / joystick completo

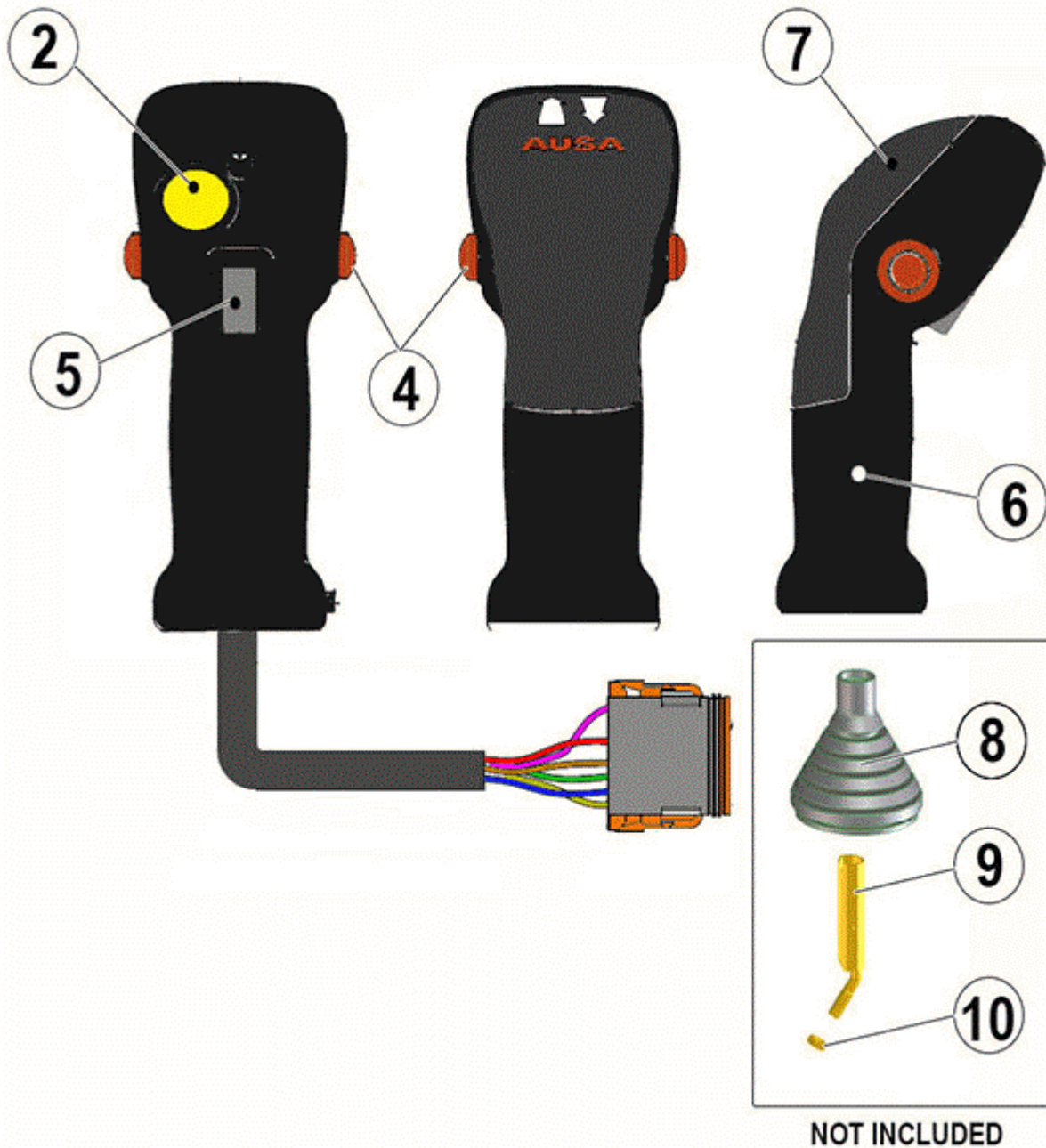


FIGURE	REFERENCE	DENOMINATION	AMOUNT
001	35.11181.00	JOYSTICK	1
002	10.14324.00	PUSCH BUTTOM	1
004	10.14319.00	BUTTON 4TH VALVE	2

005	10.14329.01	SWITCH OTTO F-N-R	1
006	35.11192.00	BODY JOYSTICK	1
007	12.11013.02	TOP COVER JOYSTICK	1
008	43.50349.00	DUST PROTECTOR	1
009	10.13154.02	AXIS CIL/ROS 180XD25XM10	1
010	701.10000.66	NUT DIN934 M10x1.5	1

# 11.ELECTRIC SYSTEM

## 01.DASHBOARD

CHASSIS: 0

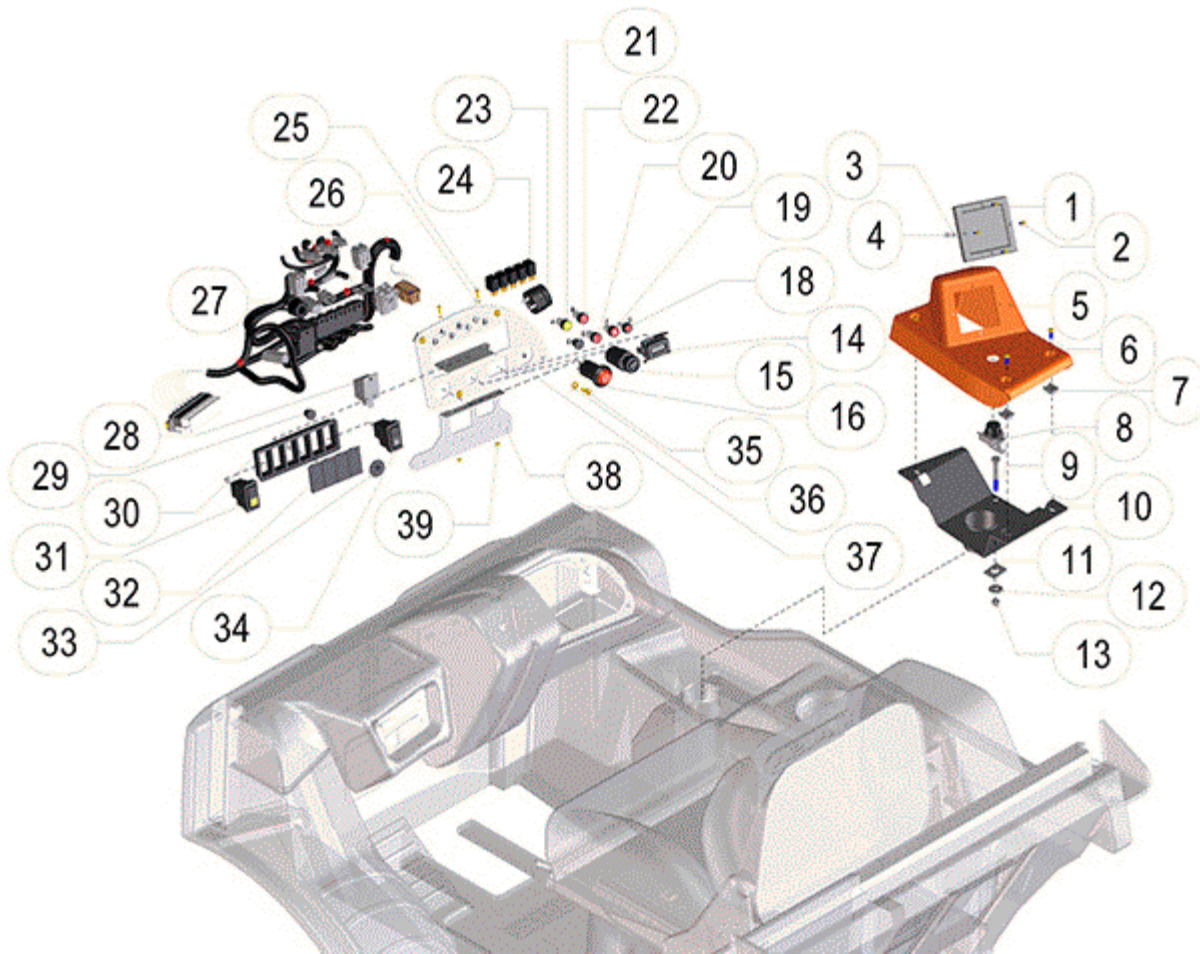


FIGURE	REFERENCE	DENOMINATION	AMOUNT
002	601.04020.87	SCREW DIN912 M4x20	4
003	101.04000.66	WASHER DIN125 D4	4
004	701.04000.66	NUT DIN934 M4	4
005	35.11003.01	SCREEN DASHBOARD 142X158X308	1
006	630.06015.96	SCREW ISO7380 M6x15	3
007	727.06004.86	CAGED NUT M6x4	7
008	35.11005.00	CONTROL KEY 2 POSITIONS ASSY	1
009	604.08060.86	SCREW DIN931 M8x60	1
010	35.11004.00	FIXATION SUPPORT 107X146X280	1
011	00.00184.00	WASHER DIN434 14X30X4.9	1
012	112.08000.66	WASHER DIN9021 D8	1
013	711.08000.66	NUT DIN982 M8	1
014	35.11185.00	HOURS COUNTER	1
015	35.11184.00	KEYSWITCH	1

016	35.11182.00	PARKING BRAKE	1
018	IM.20113.00	AIR FILTER INDICATOR	1
019	IM.20109.00	OIL PRESSURE INDICATOR	1
020	IM.20110.00	GENERATOR INDICATOR	1
021	IM.20114.00	PRE HEATING INDICATOR	1
022	IM.20108.00	WATER TEMPERATURE INDICATOR	1
023	35.11187.00	BUZZER 80/90dB	1
024	IM.20026.01	MICRO RELAYS WITH DIODE	1
025	615.04015.66	SCREW DIN84 M4x15	2
026	101.04000.66	WASHER DIN125 D4	1
027	35.11101.00	HARNES I/E STANDARD DASHBOARD	1
028	10.14288.00	STARTING RELAY 70A	1
029	IM.30053.00	ABS INDICATOR CAP	2
030	35.11186.00	FIXING SUPPORT FOR 6 SWITCHES	1
031	12.11052.00	ROTARY LIGHT SWITCH	1
032	12.11024.00	SWITCH CAP	1
033	12.11038.00	CAP D.30	1
034	12.11051.00	HORN SWITCH	1
035	630.06020.96	SCREW ISO7380 M6x20	4
036	101.06000.66	WASHER DIN125 D6	4
037	35.08110.00	INSTRUMENT PANEL COVER	1
038	35.08109.00	RELAYS FIXING SUPPORT	1

## 11.ELECTRIC SYSTEM

### 01.DASHBOARD

CHASSIS: 0

FIGURE	REFERENCE	DENOMINATION	AMOUNT
039	701.04000.66	NUT DIN934 M4	2

# 11.ELECTRIC SYSTEM

## 02.HARNES, AUDIBLE AND LIGHT WARNINGS

CHASSIS: 0

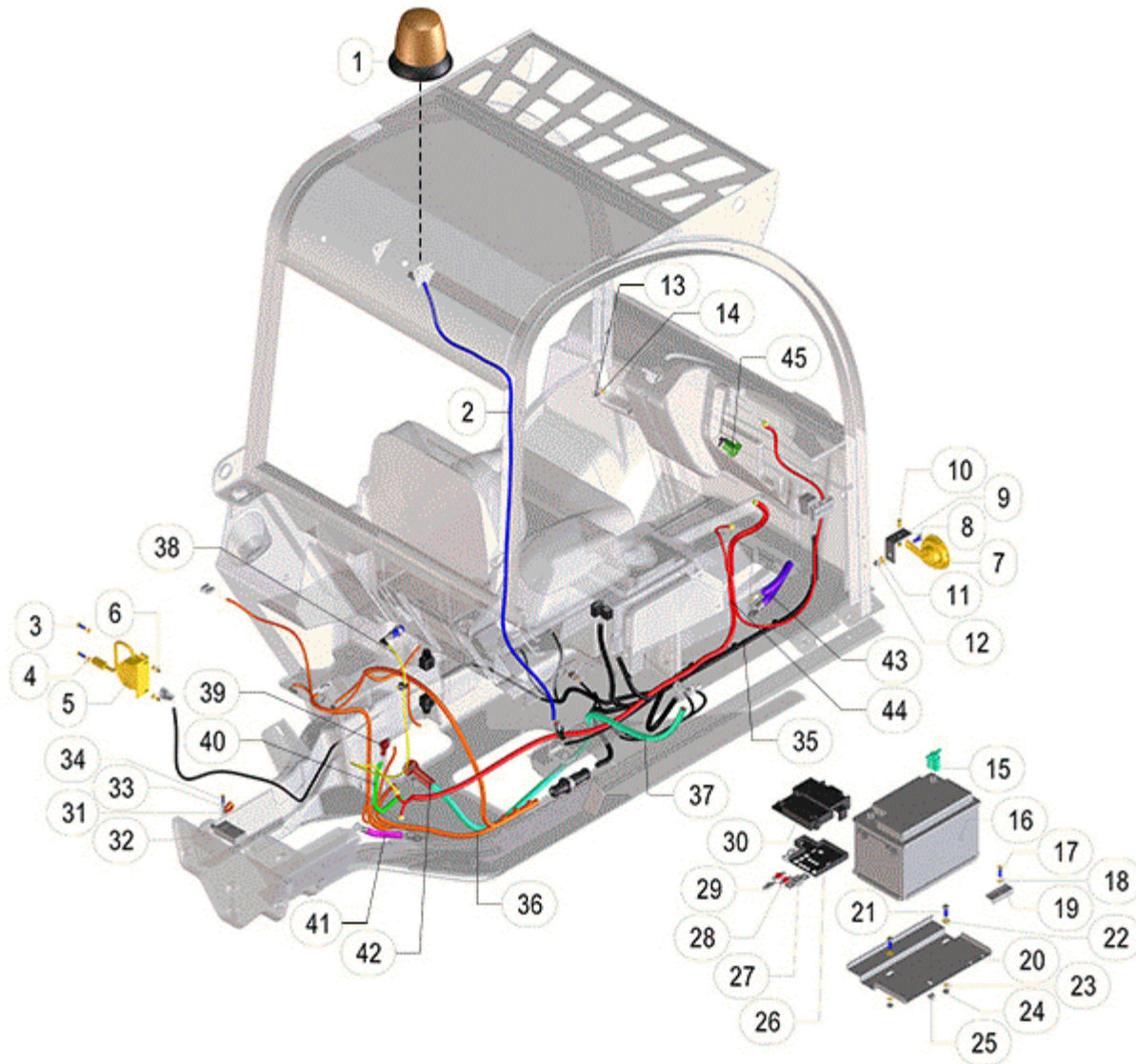


FIGURE	REFERENCE	DENOMINATION	AMOUNT
001	01.00921.02	ROTATING LIGHT BRITAX	1
002	35.11105.00	ROTARY LIGHT I/E HARNES	1
003	603.06020.86	SCREW DIN933 M6x20	2
004	101.06000.66	WASHER DIN125 D6	2
005	70.11326.00	REVERSE BREAK ACOUSTIC WARNING	1
006	711.06000.66	NUT DIN982 M6	3
007	70.11309.00	HORN	1
008	603.08020.86	SCREW DIN933 M8x20	2
009	55.10127.00	PROFILE 60x60x30	1
010	630.06020.96	SCREW ISO7380 M6x20	1

011	101.08000.66	WASHER DIN125 D8	1
012	711.08000.66	NUT DIN982 M8	1
013	630.05015.96	SCREW ISO7380 M5x15	2
014	101.05000.66	WASHER DIN125 D5	2
015	20.11007.01	NEGATIVE BATTERY CONNECTOR	1
016	15.01411.00	BATTERY 12VX70AH	1
017	603.06025.86	SCREW DIN933 M6x25	1
018	104.06000.00	WASHER DIN7980 D6	1
019	20.11101.00	FIXATION SUPPORT 2X10X70	1
020	10.04294.00	BATTERY SUPPORT	1
021	603.08025.86	SCREW DIN933 M8x25	2
022	101.08000.66	WASHER DIN125 D8	2
023	104.08000.00	WASHER DIN7980 D8	2
024	701.08000.66	NUT DIN934 M8X1,25	2
025	726.06003.66	CAGED NUT M6x3	1
026	20.11009.00	BATTERY FUSE BOX	1
027	20.11010.00	200A PROTECTION FUSE	1
028	20.11011.00	FUSE 50A PROTECTION	2
029	20.11011.01	FUSE 60A GENERAL PROTECTION	1
030	20.11014.00	BATTERY FUSEBOX COVER	1
031	830.01006.00	CLAMP LOOP D10x6	2
032	35.11009.00	LOAD SENSOR	1
033	104.04000.00	WASHER DIN7980 D4	1
034	603.04020.87	SCREW DIN 933 M4X20	1
035	35.11102.00	GENERAL I/E HARNESS	1
036	35.11103.00	HARNESS I/E ENGINE	1

## 11.ELECTRIC SYSTEM

### 02.HARNESS, AUDIBLE AND LIGHT WARNINGS

CHASSIS: 0

FIGURE	REFERENCE	DENOMINATION	AMOUNT
037	35.11106.00	POSITIVE ELECTRIC CABLE D35X1200MM	1
038	35.11127.00	HARNESS I/E INDUCTIVE SENSOR NA+	1
039	32.11046.00	ALTERNATOR RUBBER TERMINAL PROTECTOR	1
040	70.11314.00	ALTERNATOR ELECTRIC CABLE	1
041	57.11005.00	NEGATIVE ELECTRIC CABLE	1
042	32.11039.00	STARTER RUBBER TERMINAL PROTECTOR	1
043	35.11107.00	NEGATIVE ELECTRIC CABLE D35X450MM	1
044	35.11125.00	HARNESS I/E STABILITY SENSOR	1



## 12.OPTIONAL SETTINGS

### 01.WORKING LIGHTS AND MIRRORS

CHASSIS: 0

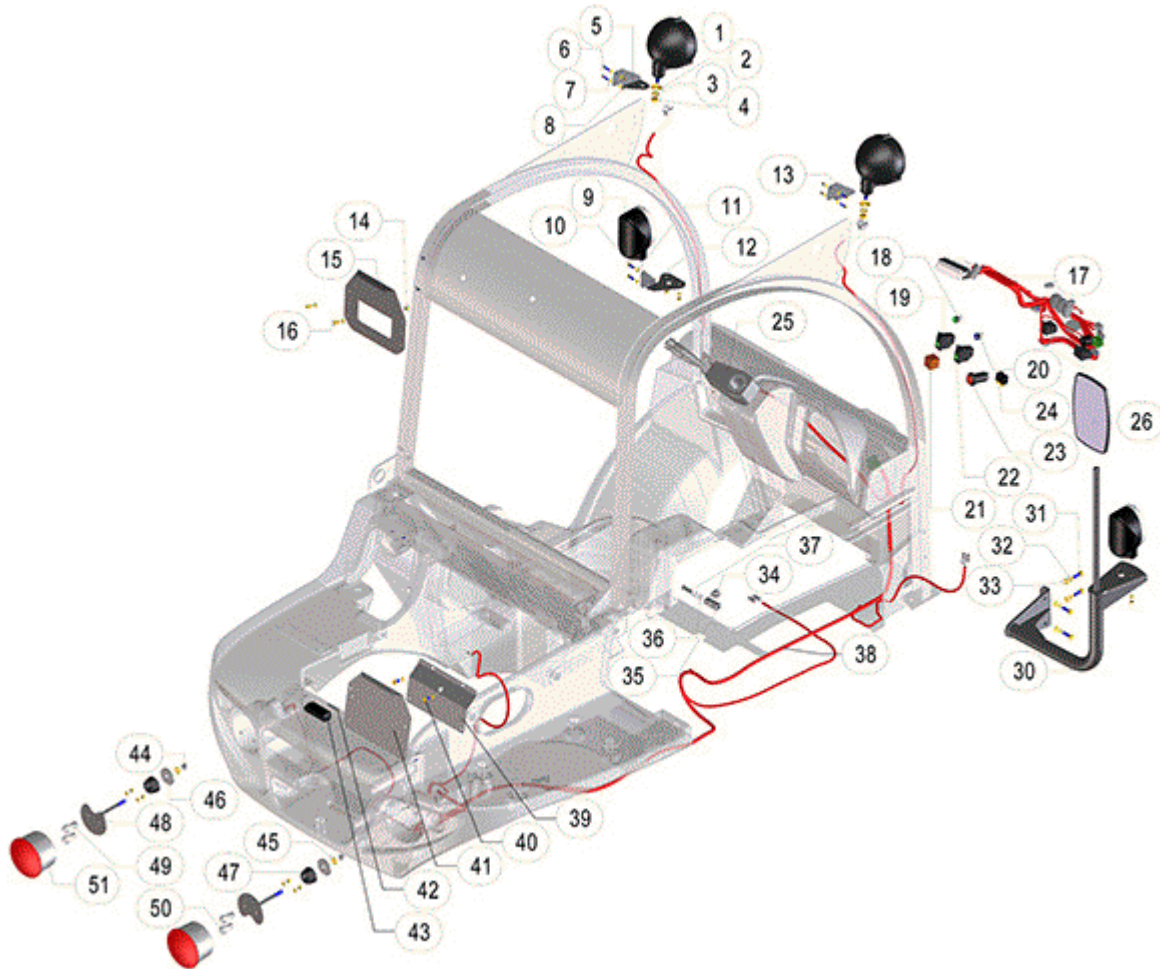


FIGURE	REFERENCE	DENOMINATION	AMOUNT
001	33.11051.00	MAIN LIGHT H4 Ø132	2
005	35.13010.00	LEFT SUPPORT LIGHT FIXATION	1
006	603.05020.86	SCREW DIN933 M5x20	4
007	101.05000.66	WASHER DIN125 D5	10
008	711.05000.66	NUT DIN982 M5	4
009	33.11050.01	INTERMITTENT AND POSITION LIGHT	2
010	603.06020.86	SCREW DIN933 M6x20	2
011	101.06000.66	WASHER DIN125 D6	8
012	35.13021.00	LEFT LIGHT SUPPORT	1
013	35.13011.00	RIGHT LIGHT FIXING SUPPORT	1
014	711.06000.66	NUT DIN982 M6	4
015	35.11120.00	NUMBER PLATE 240X210X73 SUPPORT	1
016	630.06020.96	SCREW ISO7380 M6x20	2

017	35.11104.00	HARNESS OPTIONAL PANEL	1
018	IM.20107.00	INTERMITTENT LIGHT INDICATOR	1
019	13.11129.00	POSITION LIGHTS SWITCH	1
020	IM.20112.00	BEAM LIGHTS INDICATOR	1
021	IM.20025.00	INTERMITTENCE BOX	1
022	IM.20016.00	WORKING LIGHT SWITCH	1
023	12.11015.00	WARNING SWITCH	1
024	IM.20026.01	MICRO RELAYS WITH DIODE	2
025	35.11160.00	LIGHTS AND WIPERS LEVER CONTROL	1
026	12.08011.00	REARVIEW MIRROR	1
030	35.13020.01	REARVIEW MIRROR AND LIGHT RIGHT SUPPORT	1
031	603.08030.86	SCREW DIN933 M8X30	4
032	104.08000.00	WASHER DIN7980 D8	6
033	101.08000.66	WASHER DIN125 D8	4
034	43.01520.00	BRAKE FLUID SWITCH	1
035	46.05064.00	FITTING O/H/H	1
036	106.10000.20	WASHER CU 10x16x1,5 DIN7603A	2
037	20.05036.00	FITTING SCREW SIMPLE M10X1	1
038	35.11111.00	HARNESS I/E OPTIONAL LIGHTS	1
039	70.08095.00	ANGLE SUPPORT 230X130X35	1
040	603.08015.86	SCREW DIN933 M8x15	2
041	46.10754.00	PIN SUPPORT 25x195x250	1
042	46.01324.00	LAMP 12V 5W	1

## 12.OPTIONAL SETTINGS

### 01.WORKING LIGHTS AND MIRRORS

CHASSIS: 0

FIGURE	REFERENCE	DENOMINATION	AMOUNT
043	46.10755.00	NUMBER PLATE LIGHT	1
044	711.10000.66	NUT DIN982 M10x1.5	2
045	101.10000.66	WASHER DIN125 D10	2
046	37.00374.00	WASHER DIN9021 14,5x50x5	2
047	15.00113.00	SHOCK DAMPER 22X47X22.5 GOMA	2
048	32.11100.00	LIGHT SUPPORT 126X100X86	2
049	31.01331.00	LAMP 12V 21W/5W	2
050	31.01329.00	LAMP 12V 21W	2
051	10.14211.00	POSITION-INTERMITTENCE-BRAKING WORKING LIGHTS	2

## 12.OPTIONAL SETTINGS

### 02.PROTECTIVE GRILLE

CHASSIS: 0

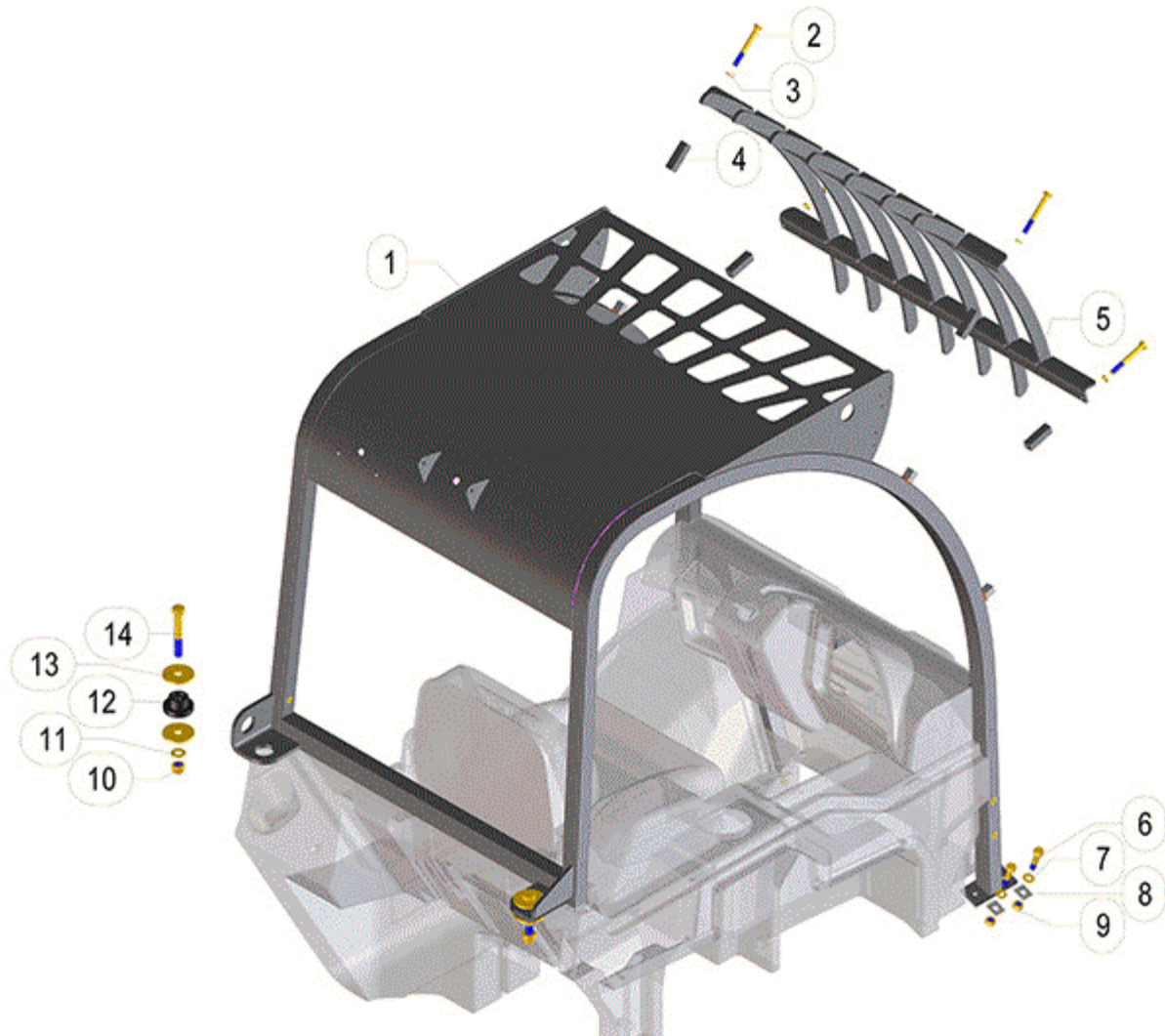


FIGURE	REFERENCE	DENOMINATION	AMOUNT
001	35.08151.00	DRIVERS PROTECOTR GRILL 1425x1	1
002	604.10090.86	NUT	4
003	104.10000.00	WASHER DIN7980 D10	4
004	35.08125.00	GRILL SUPPORT	4
005	35.08107.00	CABIN GRILL PROTECTOR	1
006	604.12050.86	SCREW DIN931 M12x50	4
007	101.12000.66	WASHER DIN125 D12	3
008	00.00184.00	WASHER DIN434 14X30X4.9	3
009	711.12000.66	NUT DIN982 M12	2
010	711.16000.66	NUT DIN982 M16 8.8 K	2
011	101.16000.66	WASHER DIN125 D16	2

012	43.70831.00	SHOCK DAMPER	2
013	43.70833.00	WASHER 65X16X5	4
014	604.16110.86	SCREW DIN931 M16x110	2

## 12.OPTIONAL SETTINGS

### 03.PANORAMIC VIEW MIRROR

CHASSIS: 0

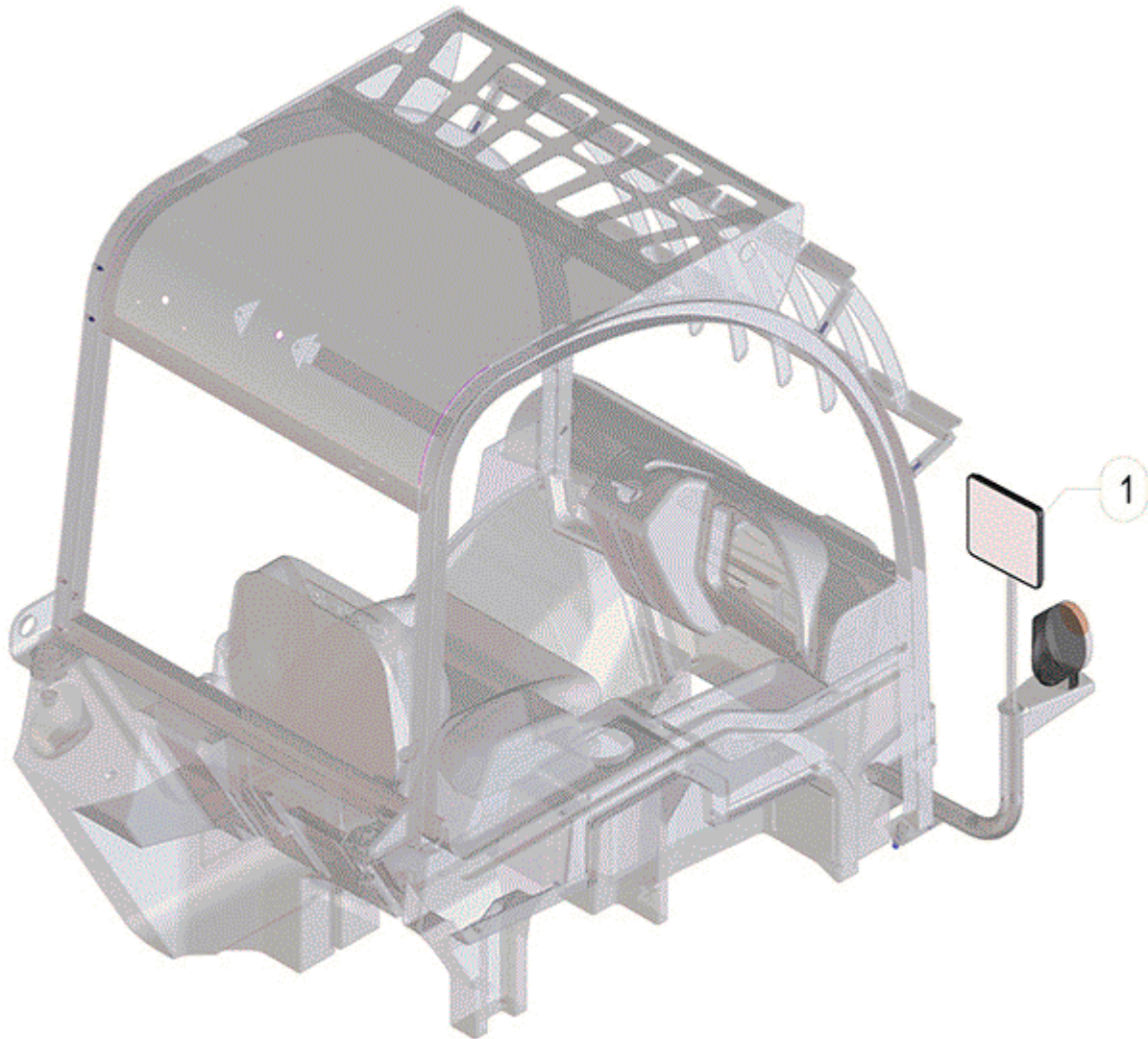


FIGURE	REFERENCE	DENOMINATION	AMOUNT
001	35.08069.00	PANORAMIC REARVIEW MIRROR D18	1

## 12.OPTIONAL SETTINGS

### 04.FORKS 1200MM

CHASSIS: 0

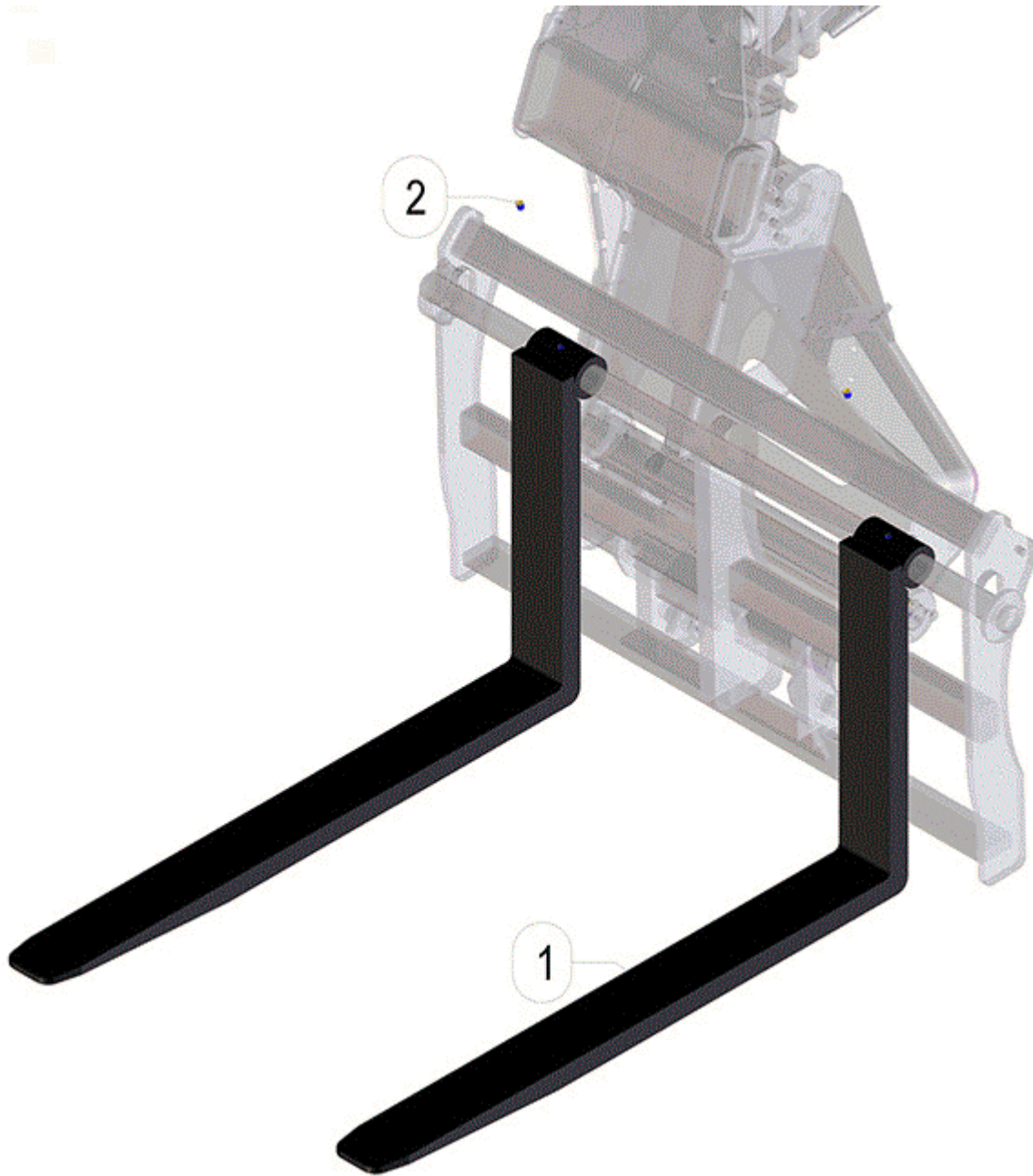


FIGURE	REFERENCE	DENOMINATION	AMOUNT
001	35.09321.00	FORK ARM 1200MM	2
002	612.10012.96	SCREW DIN913 M10X12 12K	2

## 12.OPTIONAL SETTINGS

### 05.LOAD PROTECTOR

CHASSIS: 0

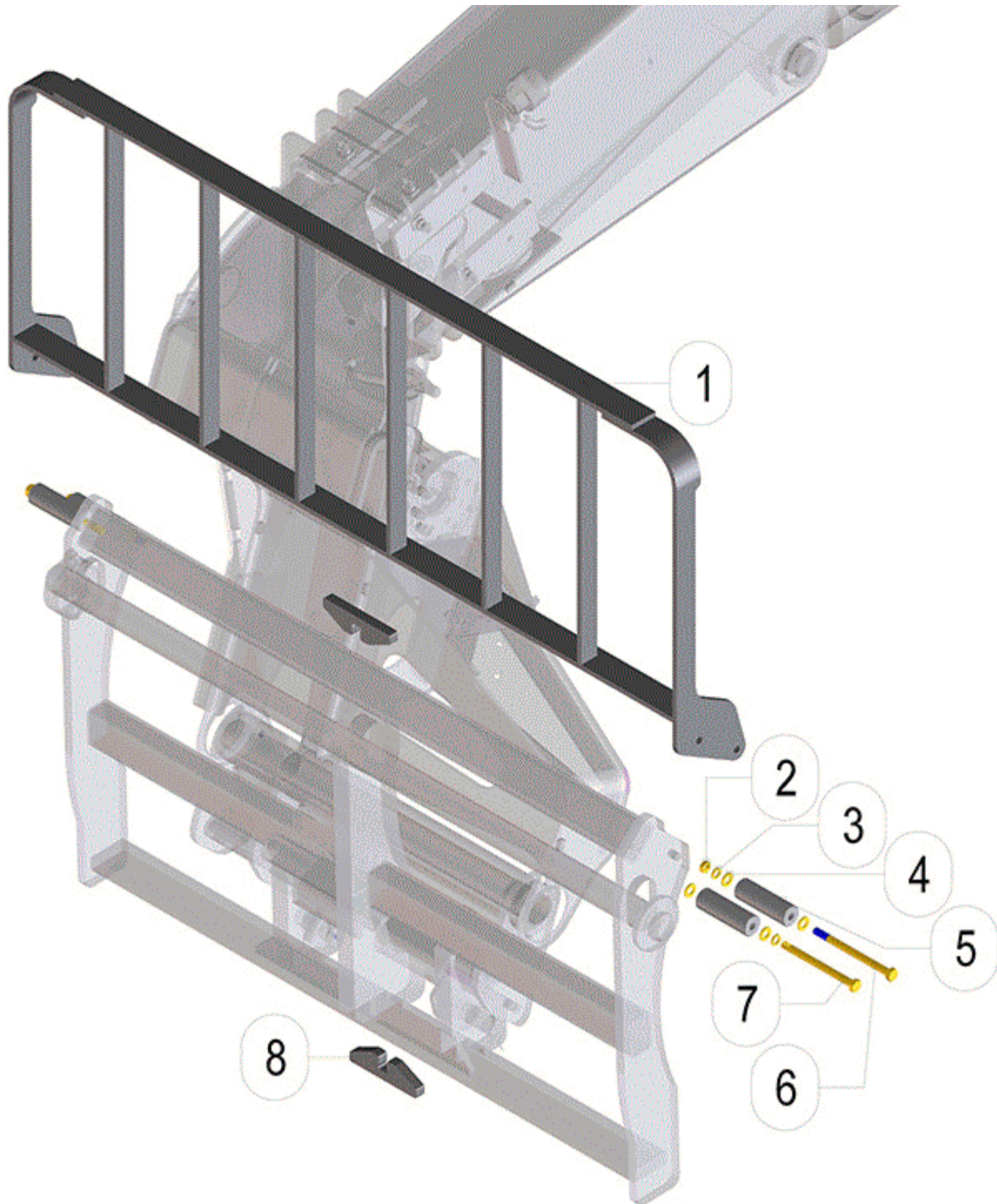


FIGURE	REFERENCE	DENOMINATION	AMOUNT
001	32.13300.01	LOAD GUARD 1248X555X129	1
002	701.10000.66	NUT DIN934 M10x1.5	2
003	104.10000.00	WASHER DIN7980 D10	4

004	101.10000.66	WASHER DIN125 D10	7
005	32.13304.00	CAP. T204H ADAPTER	4
006	604.10140.86	BOLT DIN931 M10x140	2
007	604.10130.86	SCREW DIN931 M10X130	2
008	32.95319.00	SUPPORT 125X35X25	2



## 12.OPTIONAL SETTINGS

### 06.TOOLBOX

CHASSIS: 0

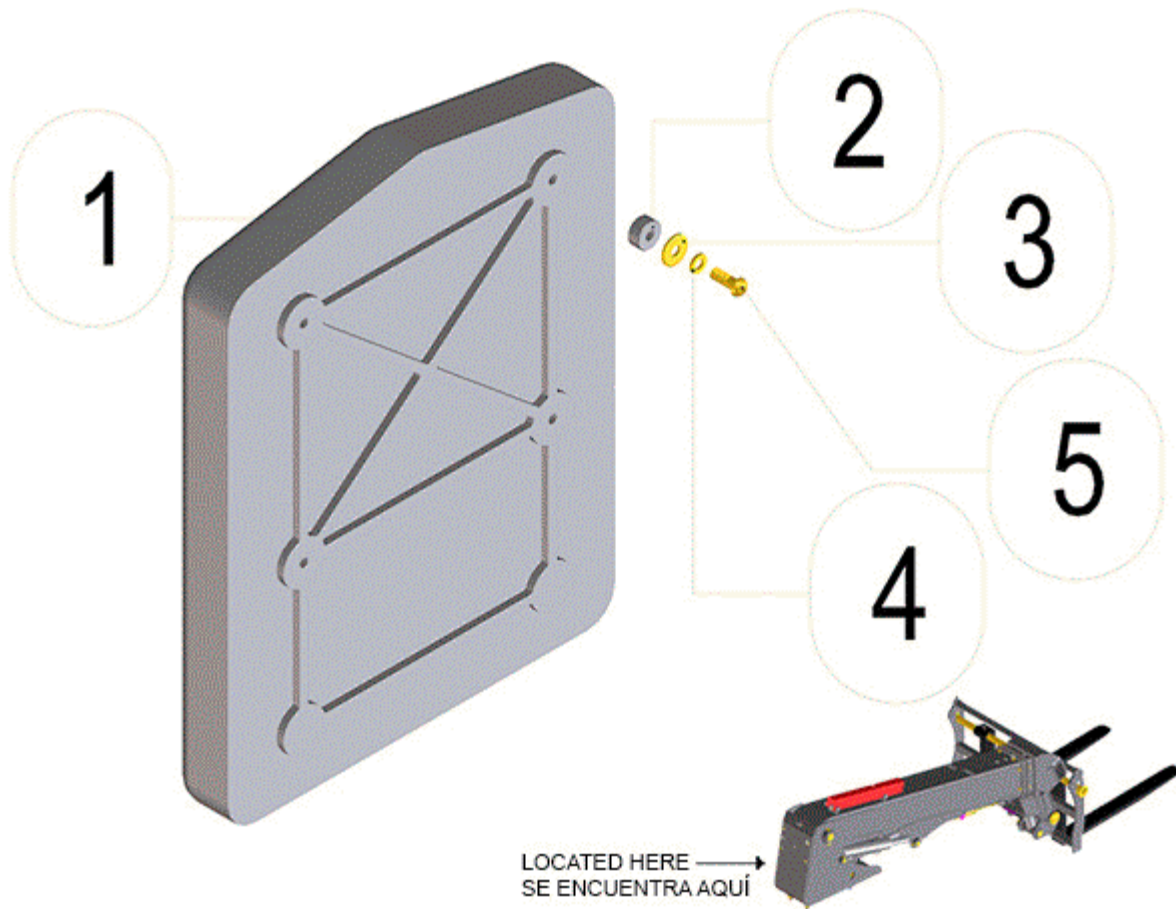


FIGURE	REFERENCE	DENOMINATION	AMOUNT
001	09.12130.00	TOOLBOX 50X280X36 PL	1
002	20.10010.01	PIN SUPPORT 8X17	4
003	112.06000.66	WASHER DIN9021 D6	4
004	104.06000.00	WASHER DIN7980 D6	4
005	630.06020.96	SCREW ISO7380 M6x20	4

# 12.OPTIONAL SETTINGS

## 07.PLATES AND STICKERS

CHASSIS: 0

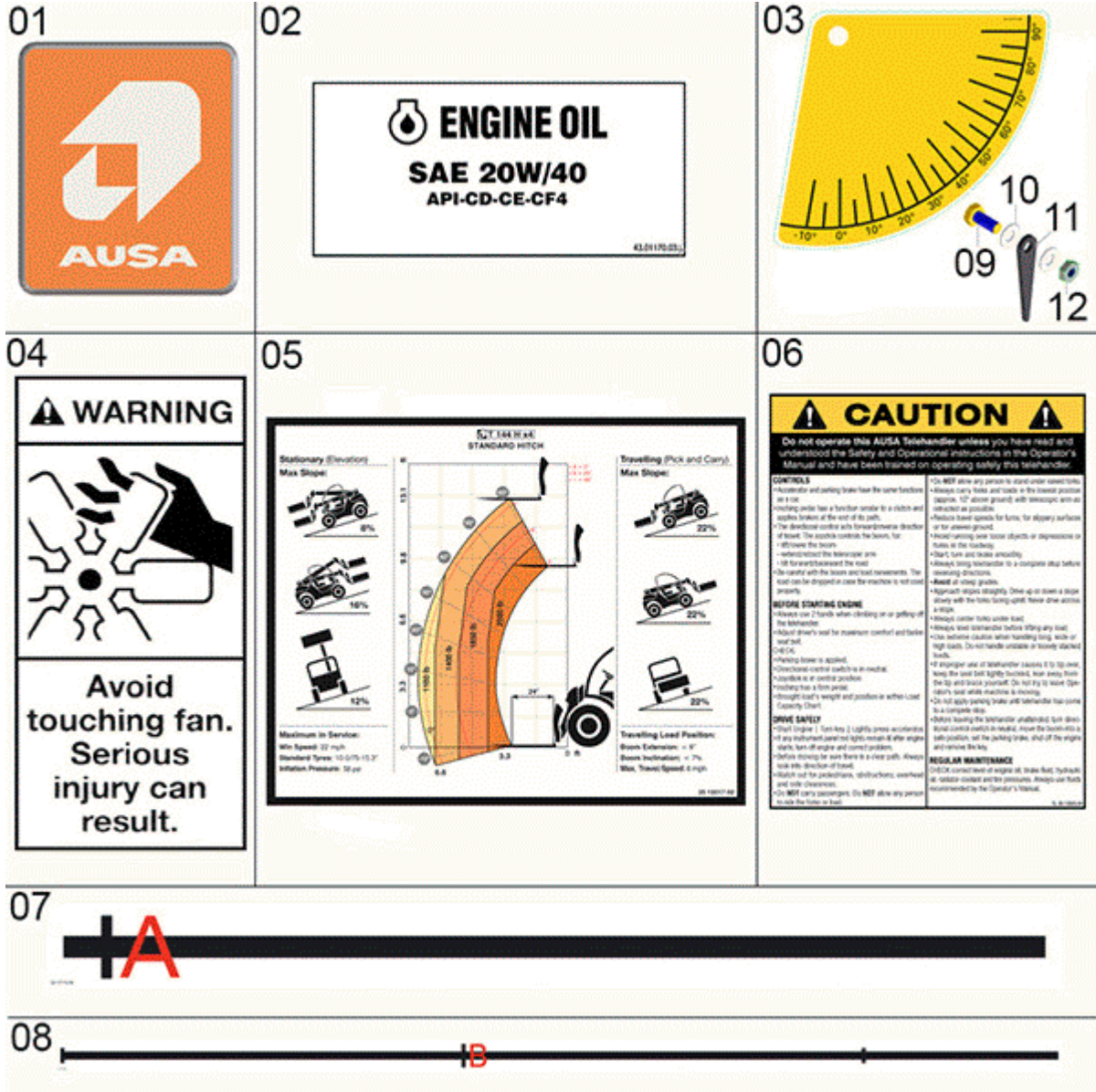


FIGURE	REFERENCE	DENOMINATION	AMOUNT
001	46.08099.00	AUSA BADGE	1
002	43.01170.03	INDICATIVE STICKER 90x45 ENGINE OIL TYPE	1
003	32.12117.00	PLATE 110x110	1
004	02.00766.00	INDICATIVE STICKER 40x80 USA DO NOT TOUCH	1
005	35.12017.02	LOADING INDICATIVE STICKER USA	1
006	35.12023.00	SAFETY STICKER 165X215	1
007	32.12115.00	ADHESIVE PLATE 465X38	1
008	32.12116.00	ADHESIVE STICKER 1250X38	1

009	603.10025.86	SCREW DIN933 M10x25	1
010	116.01000.00	WASHER DIN 125 A D10	2
011	32.12010.00	Angle Indicator	1
012	702.10000.66	NUT DIN936	1

## 12.OPTIONAL SETTINGS

### 08.PLATES AND STICKERS

CHASSIS: 0

02

	MACHINE TYPE	
	FRAMING	
	ENGINE ID	
	NO	
	YEAR OF MANUFACTURE	
WEIGHT	UNLOADED	1,850 Kg
	LOADED	1,850 Kg
FRONT AXLE	NOMINAL LOAD	1,850 Kg
	TIRE PRESSURE	200
REAR AXLE	NOMINAL LOAD	1,850 Kg
	TIRE PRESSURE	200
CAPACITY	WORKING LOAD	1,850 Kg

Different attachments consider the capacity of this forklift. This forklift and FOPS conform to ANSI B 56 and ISO Standards.

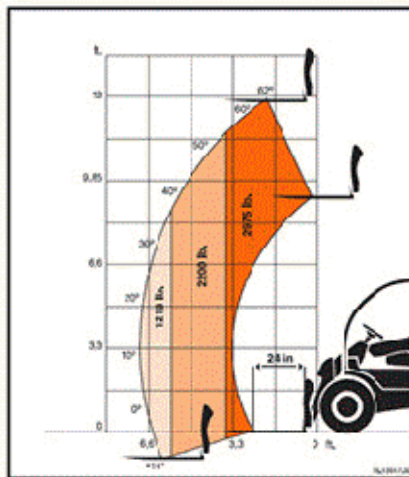
AUSA Center, S.L.U. Tel. +34 93 874 73 11 Fax +34 93 874 73 11

03

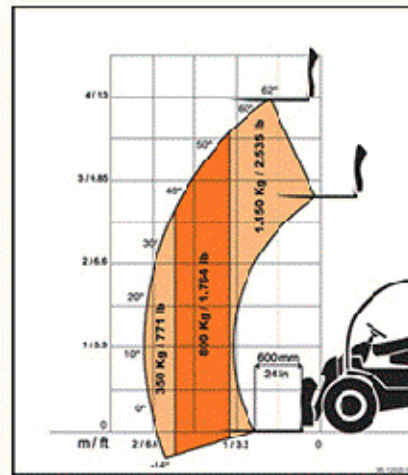
Use only SAE 10W oil  
or ATF fluids type A suffix A  
for multiplate disc brakes

See Maintenance Chart in  
Operators Manual  
for recommended brands

05



06



04

**! ATTENTION**

**Avoid  
hot exhaust  
pipe.  
Avoid serious  
burns.**

07

AUSA Center, S.L.U. [ausa@ausa.com](mailto:ausa@ausa.com)  
Tel. +34 93 874 73 11 [www.ausa.com](http://www.ausa.com)

**EMISSION CONTROL INFORMATION:**

THIS EQUIPMENT HAS AN ENGINE THAT MEETS U.S.  
EPA EMISSION STANDARDS UNDER CFR 51039.625

57.12018.00

08

**! WARNING !**

You are protected by an overhead guard which complies with the provisions of ISO 3449:1992 for FOPS, ISO 3471:1994 for RCPS and ASME B56.6. It protects the operator against falling objects and rollover. The seat belt is an important part of this safety system and must always be fastened before operating the Forklift. Failure to wear the seat belt in the event of an accidental tip over could result serious injury or death as you could be crushed by the machine or by the overhead guard.

002	01.00779.32	PLATE CHARACTERISTICS USA TAURULIFT	1
003	43.70780.02	INDICATIVE OIL STICKER	1
004	02.00765.00	INDICATIVE STICKER 40x80 HOT PARTS	1
005	35.12017.00	LOADING STICKER 130X150	1
006	35.12020.00	LOADING STICKER 130X150	1
007	57.12018.00	STICKER 0.3X40X100 EPA	1
008	10.01414.03	USA INDICATIVE STICKER	1

# INDEX

---

## **01.before starting**

01.WEBSITE INTRUCTIONS - 0 2

## **02.engine**

01.ENGINE - 0 3

02.EXHAUST SYSTEM - 0 4

03.INTAKE SYSTEM - 0 5

04.MECHANICAL POWER - 0 6

05.COOLING SYSTEM - 0 7

## **03.transmission**

01.COMPLETE TRANSMISSION - 0 8

02.FRONT AXLE - 0 9

03.STEERING AXLE - 0 11

03.STEERING AXLE - 1 12

04.PUMPS, ENGINES AND VALVES - 0 13

## **04.chassis and structural supports**

01.CHASSIS AND STRUCTURAL SUPPORTS - 0 14

## **05.braking system**

01.FOOT BRAKE - 0 15

## **06.steering**

01.HYDRAULIC STEERING - 0 16

## **07.wheels**

01.WHEELS - 0 17

01.WHEELS - 69246 18

01.WHEELS - 73932 19

## **08.machine body**

01.PROTECTORS - 0 20

02.CABIN - 0 21

03.COUNTERWEIGHT - 0 24

**09.LIFTING SYSTEM**

01.INNER TELESCOPIC ARM - 0	25
02.OUTER TELESCOPIC ARM - 0	26
03.TELESCOPIC ARM CYLINDERS - 0	27
04.TELESCOPIC ARM SUPPORT - 0	28

**10.hydraulic system**

01.PUMP, FILTER & JOYSTICK - 0	29
02.VALVES & CONNECTORS - 0	30
03.HYDRAULIC SCHEMATICS - 0	31
04. DISTRIBUTOR	33

**11. ELECTRIC INSTALLATION**

JOYSTICK	34
----------	----

**11.electric system**

01.DASHBOARD - 0	35
02.HARNES, AUDIBLE AND LIGHT WARNINGS - 0	37

**12.optional settings**

01.WORKING LIGHTS AND MIRRORS - 0	39
02.PROTECTIVE GRILLE - 0	41
03.PANORAMIC VIEW MIRROR - 0	42
04.FORKS 1200MM - 0	43
05.LOAD PROTECTOR - 0	44
06.TOOLBOX - 0	45
07.PLATES AND STICKERS - 0	46
08.PLATES AND STICKERS - 0	47